

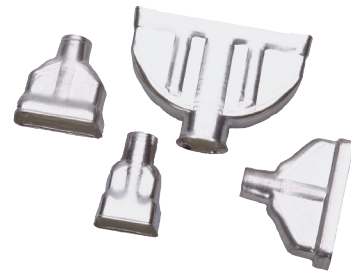
D Connector Hood

DMCK

The drawn metal cans are normally used as a press fit shielding cover prior to overmoulding with PVC. The cans are equally suitable for rear panel mounted D-sub connectors, where wire terminations inside the cabinet would otherwise be unprotected. The cable to can entry can be heat shrink sleeved to provide sealing against dust.

Sizes: 9-15-25-37

Please contact us before ordering



Centronics Shielded or Unshielded Hood

RTK-36

Material:

Unshielded version: Polyamid, UL-Recognized
Shielded version: ABS/PC, UL94 V-0 rated
Plated with Nickel over Copper

Sizes: Centronics 36

Cable Entry: Top

Features

Centronics compatible hood system.
Customer logotype available upon request.

Please contact us before ordering

