

MHD-SMT-Series

Available sizes: 9-15-25

Material:

Insulator: Glass filled
 Metal Shell: Steel
 Contacts: Copper Alloy
 Selective Gold over Nickel
 Solder End Tin Plated

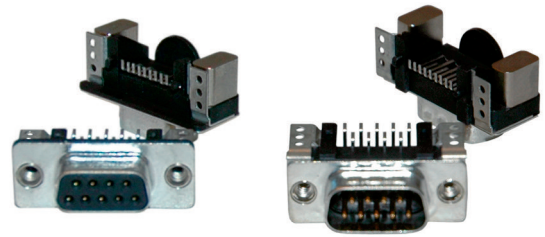
Working Current: 5,0 A max. stamped Contacts

Test Voltage: 1000 V

Insulation Resistance: 5000 MOhm

Contact Resistance: ≤ 10m Ohm

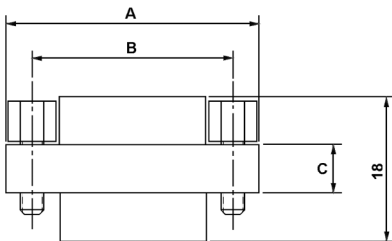
Temperature Range: -55°C to +125 °C
 +260°C / 10 sec



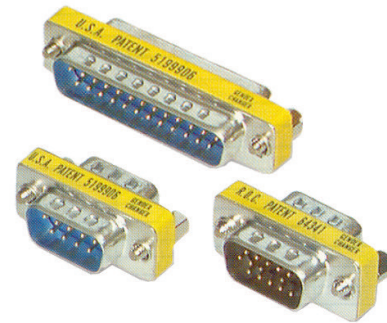
TECHNICAL DATA:

- Produced According to DIN 41652 and MIL-C-24 308
- Compatible with any connector system available which correspond to MIL or DIN specifications
- Available in Female and Male versions (Socket or Plug)
- SMT 90°, 7,3 mm version, 2 rows
- SMT 90°, 7,3 mm version, 1 row
- SMT 90°, Eurostyle, 2 rows
- SMT 90°, Eurostyle, 1 row

MHDMGC-Miniature Gender Changer Series



Size	Dim A	Dim B	Dim C
9-way	31,2	25,0	6,0
15-way	39,5	33,3	6,0
25-way	53,4	47,1	6,0
HD15-way	31,2	25,0	6,0



TECHNICAL DATA:

- Miniature Gender Changer with High Quality Performance
- Useful when changing connection between interface or linking cables together
- Small form Factor – Very Slim product
- Available in Standard sizes Sub-D: 9to9, 15to15 and 25to25
- Also available in High Density 15to15

Order code

2401-0100-01	EB410	9-Male to 9-Male
2401-0100-11	EB410MF	9-Male to 9-Female
2401-0100-21	EB411	9-Female to 9-Female
2401-0100-02	EB412	15-Male to 15-Male
2401-0100-22	EB413	15-Female to 15-Female
2401-0100-03	EB414	25-Male to 25-Male
2401-0100-13	EB414MF	25-Male to 25-Female
2401-0100-23	EB415	25-Female to 25-Female
2401-0101-02	EB418	HD15-Male to HD15-Male
2401-0100-13	EB419	HD15-Male to HD15-Female
2401-0100-23	EB420	HD15-Female to HD15-Female