

DIN41612 - Type M

Mixed Euroconnectors

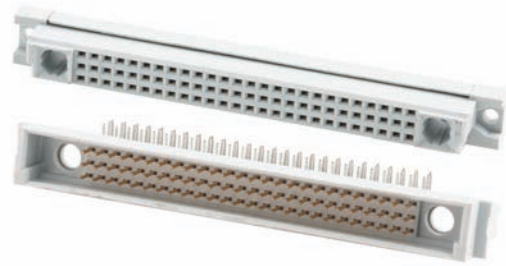
Features:

Mixed Euro Style; A variety of options available

Right Angled Dip-Solder, Wire Wrap,
Straight Dip-Solder, Press-Fit

Selective Gold in contact Area
Tin Plated in termination Area

Pintail Cross section 0,60-0,50 or 0,86-0,73
Also at 0,86-0,70 on request (Wire-Wrap)



Commonly Ordered Parts:

Pins / Gender	Typ.	Arrangement:	Pintail Length:	Style:	Part No:
42 / Male	M	42 + 6 a,b,c	3,5 - 2,5 mm	Dip Solder 90° Angled	2810-0361-01
42 / Female	M	42 + 6 a,b,c	5,0 - 4,0 mm	Dip Solder Straight	2810-0363-04
60 / Male	M	60 + 4 a,b,c	3,5 - 2,5 mm	Dip Solder 90° Angled	2810-0371-01
60 / Female	M	60 + 4 a,b,c	5,0 - 4,0 mm	Dip Solder Straight	2810-0373-04
78 / Male	M	78 + 2 a,b,c	3,5 - 2,5 mm	Dip Solder 90° Angled	2810-0381-01
78 / Female	M	78 + 2 a,b,c	5,0 - 4,0 mm	Dip Solder Straight	2810-0383-04

DIN41612 - Type R

Reversed Euroconnectors

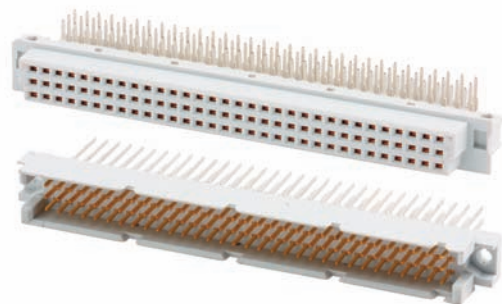
Features:

16 to 64 Male or Female connector

Right Angled Dip-Solder, Wire Wrap,
Straight Dip-Solder, Press-Fit

Selective Gold in contact Area
Tin Plated in termination Area

Pintail Cross section 0,86-0,73
Also at 0,86-0,70 on request (Wire-Wrap)



Commonly Ordered Parts:

Pins / Gender	Typ.	Arrangement:	Pintail Length:	Style:	Part No:
16 / Male	R/2	16 a,c (even)	4,5 - 2,5 mm	Dip Solder Straight	2810-2414-13
16 / Female	R/2	16 a,c (even)	3,8 - 4,0 mm	Dip Solder 90° Angled	2810-2412-12
32 / Male	R/2	32 a,c	4,5 - 2,5 mm	Dip Solder Straight	2810-2424-03
32 / Female	R/2	32 a,c	3,8 - 4,0 mm	Dip Solder 90° Angled	2810-2422-02
32 / Male	R	32 a,c (even)	4,5 - 2,5 mm	Dip Solder Straight	2810-0424-13
32 / Female	R	32 a,c (even)	3,8 - 4,0 mm	Dip Solder 90° Angled	2810-0422-12
48 / Male	R/2	48 a,b,c	4,5 - 2,5 mm	Dip Solder Straight	2810-2434-03
48 / Female	R/2	48 a,b,c	3,8 - 4,0 mm	Dip Solder 90° Angled	2810-2432-02
64 / Male	R	64 a,c (even)	4,5 - 2,5 mm	Dip Solder Straight	2810-0444-63
64 / Female	R	64 a,c (even)	3,8 - 4,0 mm	Dip Solder 90° Angled	2810-0442-62
96 / Male	R	96 a,b,c	4,5 - 2,5 mm	Dip Solder Straight	2810-0454-03
96 / Female	R	96 a,b,c	3,8 - 4,0 mm	Dip Solder 90° Angled	2810-0452-02