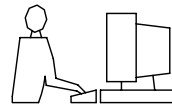
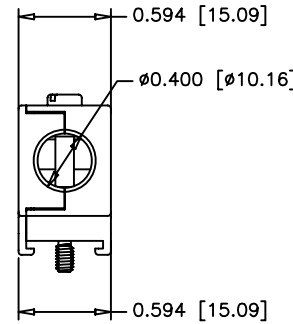
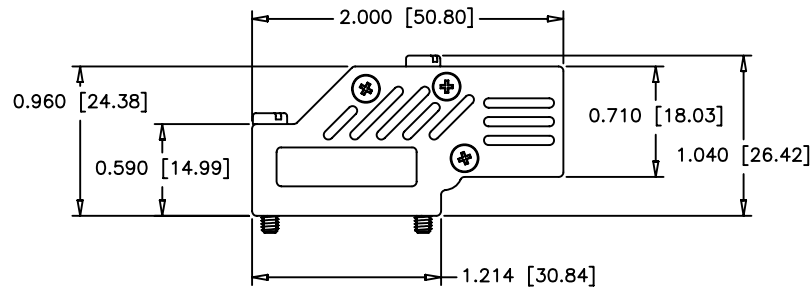


THIS IS A C.A.D. GENERATED DRAWING
DO NOT MAKE MANUAL REVISIONS TO MASTER.



* UNLESS OTHERWISE SPECIFIED TOLERANCES
ON DECIMAL IS: ANGLE $\pm 1^\circ$
UNIT: MM

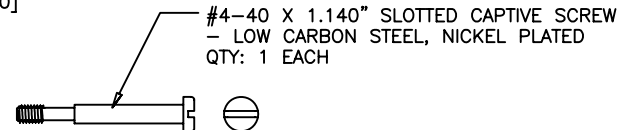
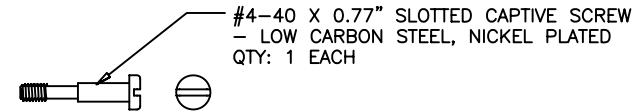
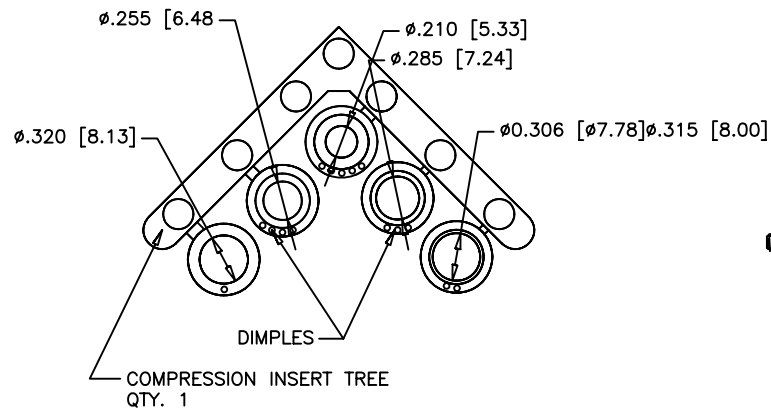
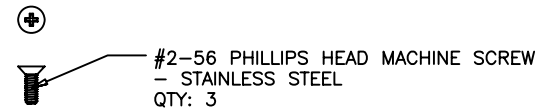
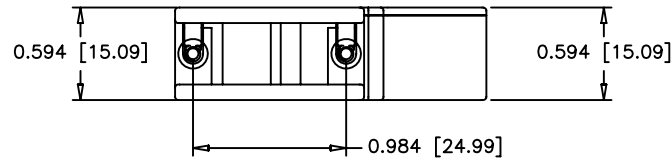


ORDER CODES:

9-WAY	1060-0135-01	MHDCMR9-ULP
-------	--------------	-------------

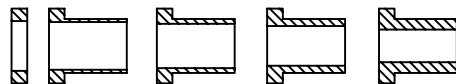
COMPRESSION INSERT TREE

- 1.MATERIAL: THERMOPLASTIC
- 2.COLOR: BLACK
- 3.DUROMETER: 75 ± 5 TYPE A PER ASTM D2240
- 4.DIMENSIONS: INCHES [MM]
- 5.TOLERANCE: ± 0.020 [0.508]



CONNECTOR COVER:

- 1.MATERIAL: ZINC ALLOY
- 2.FINISH: NICKEL PLATING PER NTC SPECIFICATION N/T 000400
- 3.DIMENSIONS: INCHES [MM]
- 4.TOLERANCE: ± 0.015 [0.381]



THESE DRAWINGS AND SPECIFICATIONS ARE THE PROPERTY OF MH CONNECTORS LTD. AND SHALL NOT BE REPRODUCED, COPIED OR USED AS THE BASIS FOR THE MANUFACTURE OR SALE OF APPARATUS WITHOUT WRITTEN PERMISSION.

DRAWN Johnny	DATE 07-09-13
APPROVED	DATE



THIS SERIES FULLY CONFORMS TO THE EUROPEAN UNION DIRECTIVES 2002/95/EC AND 2002/96/EC FOR RoHS COMPLIANCY.

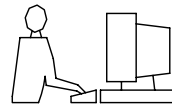


MH CONNECTORS LTD.

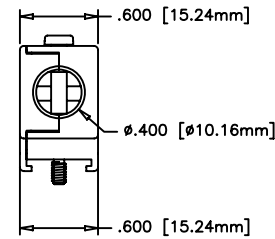
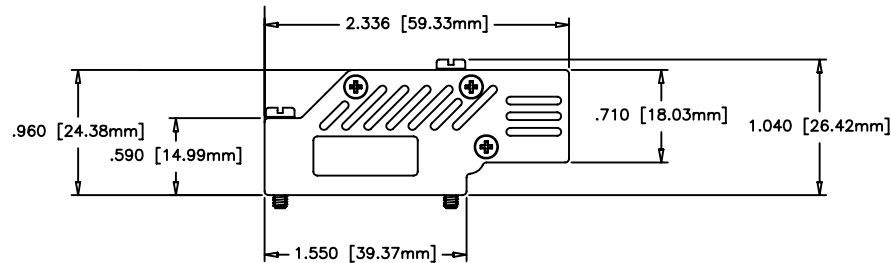
SCALE	SHEET OF 1 OF 1	REV: 2.0
-------	--------------------	-------------

DRAWING No
MHDCMR9-ULP

THIS IS A C.A.D. GENERATED DRAWING
DO NOT MAKE MANUAL REVISIONS TO MASTER.

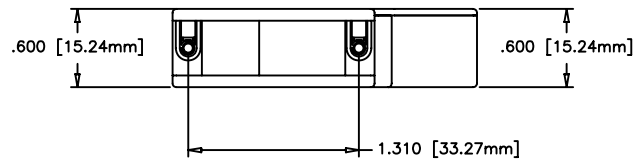


* UNLESS OTHERWISE SPECIFIED TOLERANCES
ON DECIMAL IS: ANGLE ± 1°
UNIT: MM



ORDER CODES:

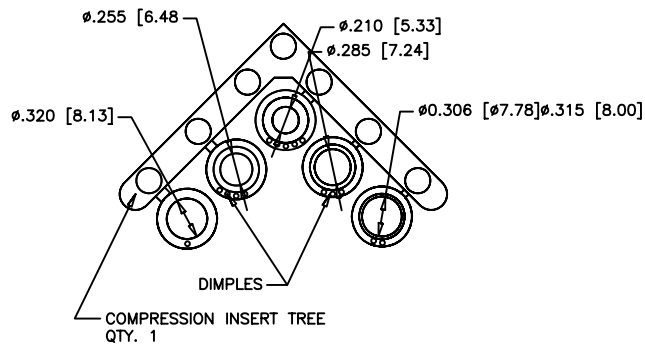
15-WAY	1060-0135-02	MHDCMR15-ULP
--------	--------------	--------------



⊕ #2-56 PHILLIPS HEAD MACHINE SCREW
- STAINLESS STEEL
QTY.: 3 EACH

⊕ #4-40 X 0.770" SLOTTED CAPTIVE SCREW
- LOW CARBON STEEL, NICKEL PLATED
QTY.: 1 EACH

⊕ #4-40 X 1.140" SLOTTED CAPTIVE SCREW
- LOW CARBON STEEL, NICKEL PLATED
QTY.: 1 EACH

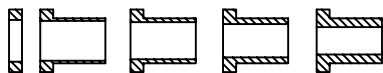


CONNECTOR COVER:

- 1.MATERIAL: ZINC ALLOY
- 2.FINISH: NICKEL PLATING PER NTC SPECIFICATION N/T 000400
- 3.DIMENSIONS: INCHES [MM]
- 4.TOLERANCE: ±0.015 [0.381]

COMPRESSION INSERT TREE

- 1.MATERIAL: THERMOPLASTIC
- 2.COLOR: BLACK
- 3.DUROMETER: 75 ±5 TYPE A PER ASTM D2240
- 4.DIMENSIONS: INCHES [MM]
- 5.TOLERANCE: ±0.020 [0.508]



THESE DRAWINGS AND SPECIFICATIONS ARE THE PROPERTY OF MH CONNECTORS LTD. AND SHALL NOT BE REPRODUCED, COPIED OR USED AS THE BASIS FOR THE MANUFACTURE OR SALE OF APPARATUS WITHOUT WRITTEN PERMISSION.

DRAWN Johnny	DATE 07-09-13
APPROVED	DATE



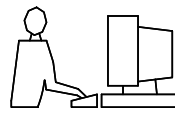
THIS SERIES FULLY CONFORMS TO THE EUROPEAN UNION DIRECTIVES 2002/95/EC AND 2002/96/EC FOR RoHS COMPLIANCY.



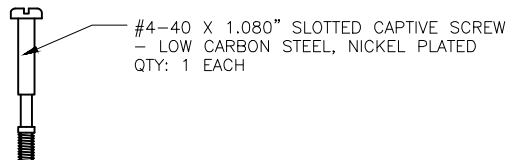
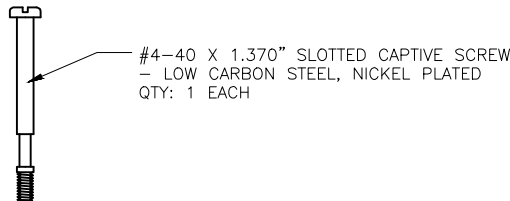
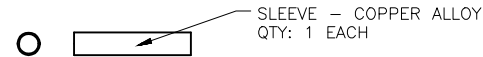
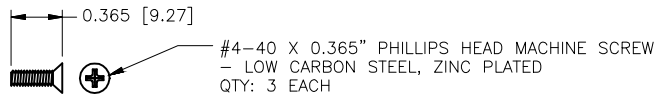
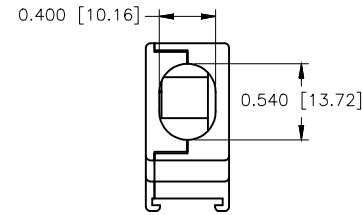
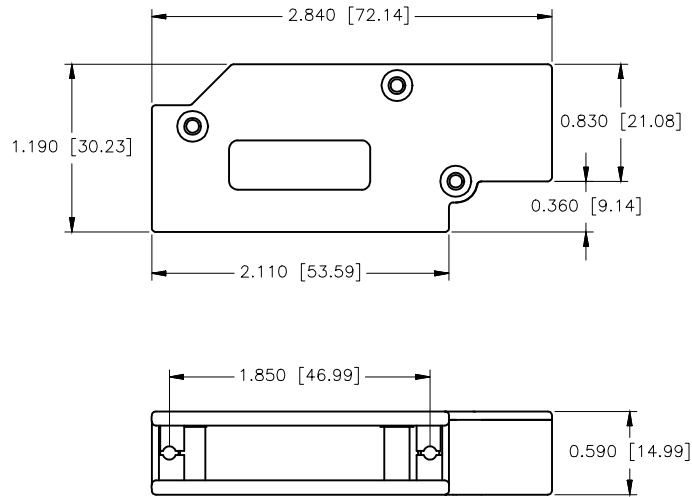
MH CONNECTORS LTD.

SCALE	SHEET OF 1 OF 1	REV: 2.0
DRAWING No MHDCMR15-ULP		

THIS IS A C.A.D. GENERATED DRAWING
DO NOT MAKE MANUAL REVISIONS TO MASTER.



* UNLESS OTHERWISE SPECIFIED TOLERANCES
ON DECIMAL IS: ±0.015 (0.381)
UNIT: INCH (MM)



CONNECTOR COVER:

1. MATERIAL: ZINC ALLOY
2. FINISH: NICKEL PLATING

THESE DRAWINGS AND SPECIFICATIONS ARE THE PROPERTY OF MH CONNECTORS LTD. AND SHALL NOT BE REPRODUCED, COPIED OR USED AS THE BASIS FOR THE MANUFACTURE OR SALE OF APPARATUS WITHOUT WRITTEN PERMISSION.

DRAWN Haley	DATE 08-08-14
----------------	------------------

APPROVED	DATE
----------	------

SCALE	SHEET OF 1 OF 1	REV: 2.0
-------	--------------------	-------------

DRAWING No DCMR25-ULP

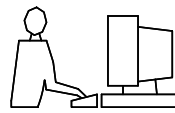


THIS SERIES FULLY CONFORMS TO THE EUROPEAN UNION DIRECTIVES 2002/95/EC AND 2002/96/EC FOR RoHS COMPLIANCY.

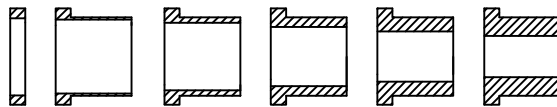
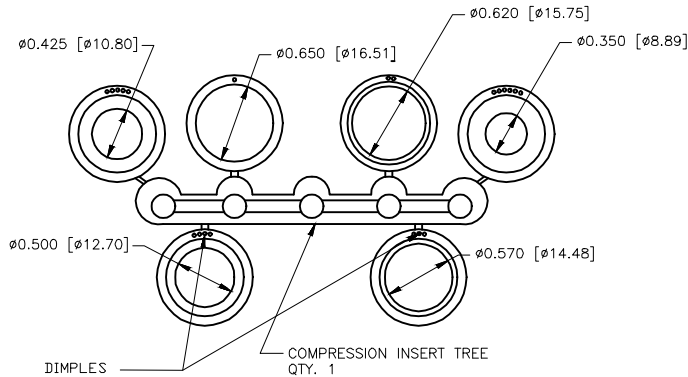
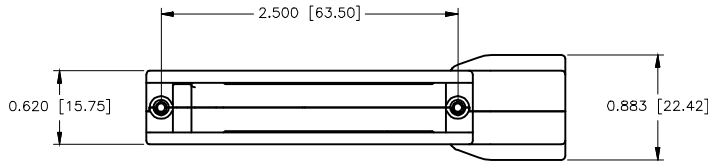
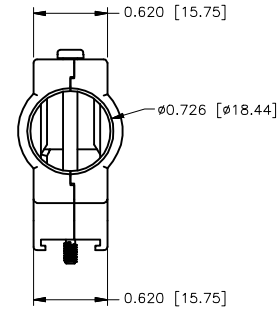
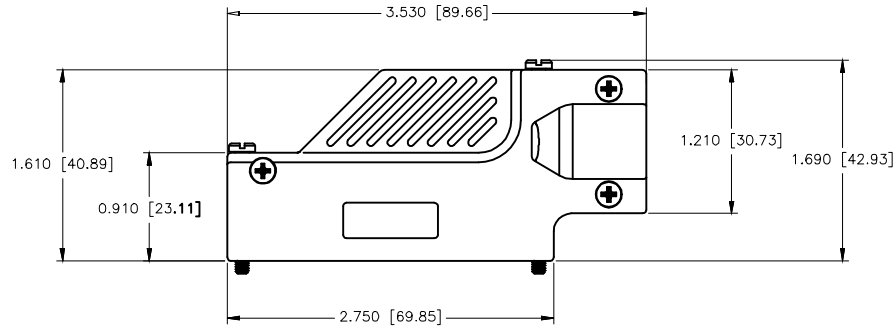


MH CONNECTORS LTD.

THIS IS A C.A.D. GENERATED DRAWING
DO NOT MAKE MANUAL REVISIONS TO MASTER.



* UNLESS OTHERWISE SPECIFIED TOLERANCES
ON DECIMAL IS:
UNIT: INCH (MM)



#4-40 X 0.5" PHILLIPS HEAD MACHINE SCREW
- LOW CARBON STEEL, BRIGHT ZINC
(HEXAVALENT CHROMIUM FREE)
QTY: 3 EACH

#4-40 X 1.80" SLOTTED CAPTIVE SCREW
- LOW CARBON STEEL, NICKEL PLATED
QTY: 1 EACH

#4-40 X 1.10" SLOTTED CAPTIVE SCREW
- LOW CARBON STEEL, NICKEL PLATED
QTY: 1 EACH

1. CONNECTOR COVER:

- 1.1 MATERIAL: ZINC ALLOY
- 1.2 FINISH: NICKEL PLATING
- 1.3 TOLERANCES: ± 0.015 (0.381)

2. COMPRESSION INSERT TREE:

- 2.1 MATERIAL: THERMOPLASTIC
- 2.2 COLOR: BLACK
- 2.3 DUROMETER: 75 \pm 5 TYPE A PER ASTM D2240
- 2.4 TOLERANCES: ± 0.020 (0.508)

THESE DRAWINGS AND SPECIFICATIONS ARE THE PROPERTY OF MH CONNECTORS LTD. AND SHALL NOT BE REPRODUCED, COPIED OR USED AS THE BASIS FOR THE MANUFACTURE OR SALE OF APPARATUS WITHOUT WRITTEN PERMISSION.

DRAWN Haley	DATE 08-11-14
----------------	------------------

APPROVED	DATE
----------	------

SCALE	SHEET OF 1 OF 1	REV: 1.0
-------	--------------------	-------------

DRAWING No
DCMR37-ULP

MH CONNECTORS LTD.



THIS SERIES FULLY CONFORMS TO THE EUROPEAN UNION DIRECTIVES 2002/95/EC AND 2002/96/EC FOR RoHS COMPLIANCY.

