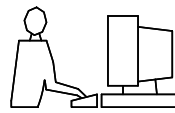
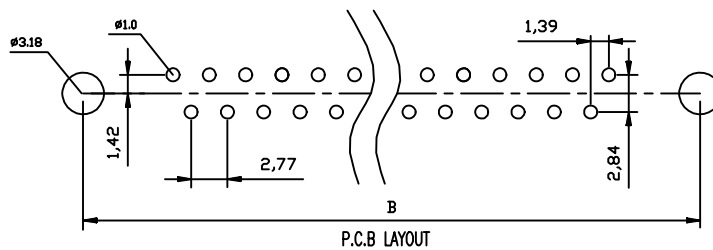
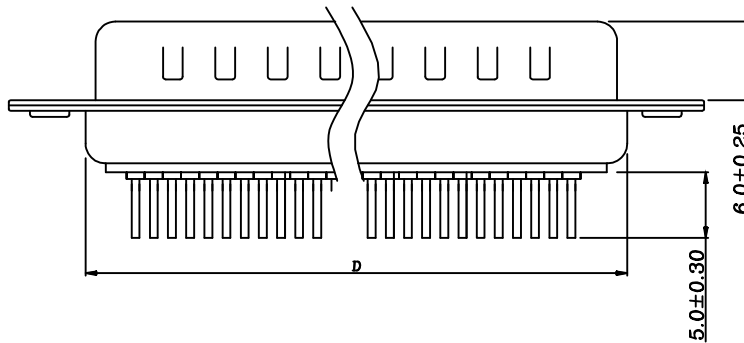
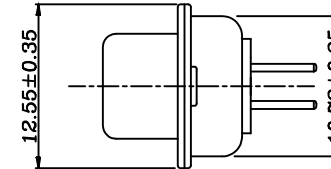
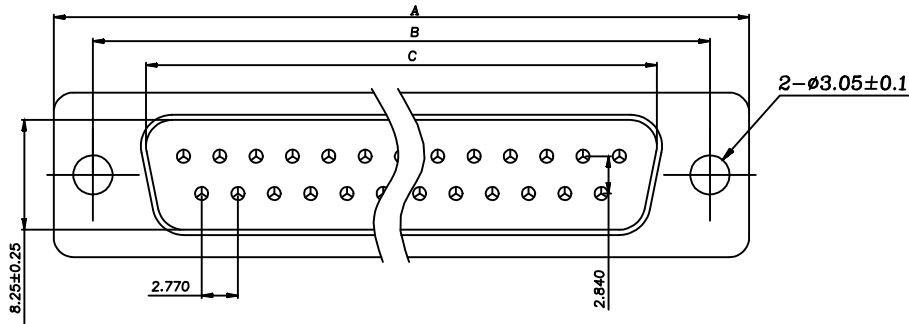


THIS IS A C.A.D. GENERATED DRAWING
DO NOT MAKE MANUAL REVISIONS TO MASTER.



* UNLESS OTHERWISE SPECIFIED TOLERANCES
ON DECIMAL IS: ANGLE X.' ± 1'
UNIT: MM X.X' ± 0.5'
X.X ± 0.35
X.XX ± 0.25
X.XXX ± 0.15



NOTES:

1.CHARACTERISTICS:

- 1.1. RATED VOLTAGE:250V.
- 1.2. RATED CURRENT:3AMP.
- 1.3. CONTACT RESISTANCE: 35mohms MAX.INITIAL.
50mohms MAX.AFTER.
- 1.4. INSULATION RESISTANCE:1000mohms MIN.at 500V DC.
- 1.5. DIELECTRIC STRENGTH:500VRMS
- 1.6. OPERATING TEMPERATURE RANGE:-55°C~85°C.
- 1.7. INSERTION/EXTRACTION FORCE PER CONTACT:340g Max./21g Min

2.MATERIAL:

- 2.1. INSULATORS:PBT+30% G.F(UL94V-0) BLACK.
- 2.2. CONTACTS:BRASS C2800R-H,GOLD(G/F)TOP OVER CONTACT AREA, 100u" Min MATTE-TIN TOP OVER SOLDER AREA,50u"Min NICKEL UNDER PLATE.
- 2.3. FRONT SHELL:SPCC,100u" Min BRIGHT TIN TOP OVER.50u" Min COPPER UNDER PLATE.
- 2.4. BACK SHELL:SPCC,100u" Min BRIGHT TIN TOP OVER,50u"Min COPPER UNDER PLATE.

Ordering	Part Number	Dimensions(mm)			
		SIZE	A±0.25	B±0.25	C±0.25
MHDD09-F-T-B-S	09	30.81	24.99	16.92	19.28
MHDD15-F-T-B-S	15	39.25	33.32	25.25	27.75
MHDD25-F-T-B-S	25	53.03	47.04	38.96	41.30
MHDD37-F-T-B-S	37	69.50	63.50	55.42	57.40

THESE DRAWINGS AND SPECIFICATIONS ARE THE PROPERTY OF MH CONNECTORS LTD. AND SHALL NOT BE REPRODUCED, COPIED OR USED AS THE BASIS FOR THE MANUFACTURE OR SALE OF APPARATUS WITHOUT WRITTEN PERMISSION.

DRAWN
HALEY
DATE
08-06-13

APPROVED
DAMIEN
DATE
08-07-13

SCALE
SHEET OF
1 OF 1
REV:
4.0

DRAWING No
MHDDXX-F-T-B-S



THIS SERIES FULLY CONFORMS TO THE EUROPEAN UNION DIRECTIVES 2002/95/EC AND 2002/96/EC FOR RoHS COMPLIANCY.

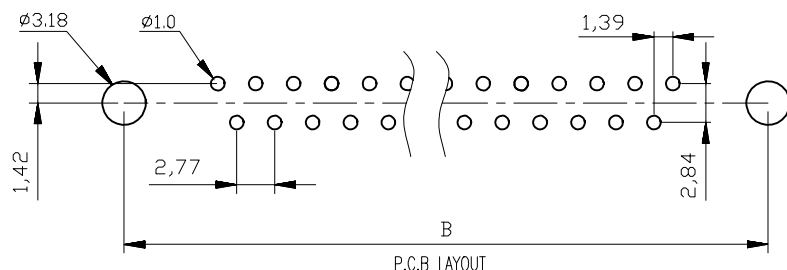
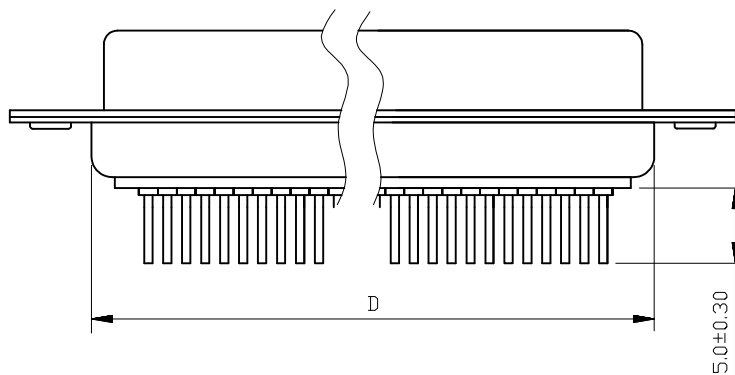
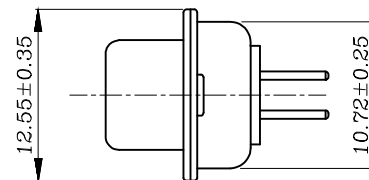
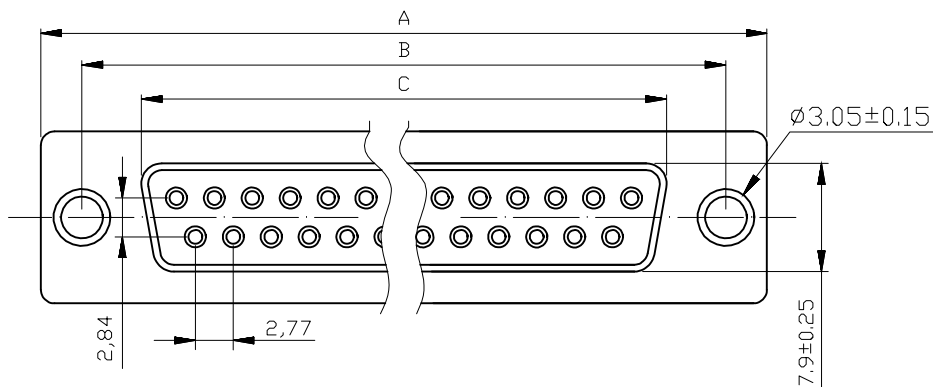


MH CONNECTORS LTD.

THIS IS A C.A.D. GENERATED DRAWING
DO NOT MAKE MANUAL REVISIONS TO MASTER.



* UNLESS OTHERWISE SPECIFIED TOLERANCES
ON DECIMAL IS: X.X ±0.35
X.XX ±0.25
X.XXX ±0.15
X." ±1"
X.X" ±0.05"



NOTES:

1.CHARACTERISTICS:

- 1.1. RATED VOLTAGE:250V.
- 1.2. RATED CURRENT:3AMP.
- 1.3. CONTACT RESISTANCE: 35mohms MAX.INITAL.
50mohms MAX.AFTER.
- 1.4. INSULATION RESISTANCE:1000mohms MIN.at 500V DC.
- 1.5. DIELECTRIC STRENGTH :500VRMS .
- 1.6. OPERATING TEMPERATURE RANGE:-55°C~85°C.
- 1.7. INSERTION/EXTRACTION FORCE PER CONTACT:340g Max./21g Min.

2.MATERIAL:

- 2.1. INSULATORS:PBT+30% G.F(UL94V-0) BLACK.
- 2.2. CONTACTS:BRASS C2800R-H,(G/F)"TOP OVER CONTACT AREA,100u"
Min MATTE-TIN TOP OVER SOLDER AREA, 50u"Min NICKEL UNDER PLATE.
- 2.3. FRONT SHELL:SPCC,100u" Min BRIGHT TIN TOP OVER.50u" Min COPPER
UNDER PLATE.
- 2.4. BACK SHELL:SPCC,100u" Min BRIGHT TIN TOP OVER,50u"Min COPPER UNDER PLATE.

Ordering Info	Dimensions(mm)				
	Part Number	SIZE	A±0.25	B±0.25	C±0.25
MHDD09-M-T-B-S	9	30.81	24.99	16.33	19.28
MHDD15-M-T-B-S	15	39.25	33.32	24.66	27.75
MHDD25-M-T-B-S	25	53.03	47.04	38.38	41.25
MHDD37-M-T-B-S	37	69.40	63.50	54.85	57.40

THESE DRAWINGS AND SPECIFICATIONS ARE THE PROPERTY OF MH CONNECTORS LTD. AND SHALL NOT BE REPRODUCED, COPIED OR USED AS THE BASIS FOR THE MANUFACTURE OR SALE OF APPARATUS WITHOUT WRITTEN PERMISSION.

DRAWN
HALEY
DATE
08-07-13

APPROVED
DAMIEN
DATE
08-08-13

SCALE
SHEET OF
1 OF 1
REV:
3.0

DRAWING No
MHDDXX-M-T-B-S



THIS SERIES FULLY CONFORMS TO THE EUROPEAN UNION DIRECTIVES 2002/95/EC AND 2002/96/EC FOR RoHS COMPLIANCY.



MH CONNECTORS LTD.