

# MHDTZI Series

## Diecast Hood & D-Sub Connector Kit | Machined



### Description

- Strong nickel plated, Die cast, Zinc hood
- Re-openable
- Cable entry, Top entry, 90 degrees
- Two strain relief clamps, secured with 4 screws, for added security
- Will accommodate up to 13.0mm diameter cable
- 4-40UNC Jackscrews
- D-Sub connector with Machined contacts, Gold plated all over

### The Kit Contains:

- Backshell halves x2
- Strain Relief Screws x2
- Housing screws x4
- UNC 4-40 Jackscrews x2
- D-Sub Connector (Male or Female) x1
- Set of metallised plastic compression inserts x1

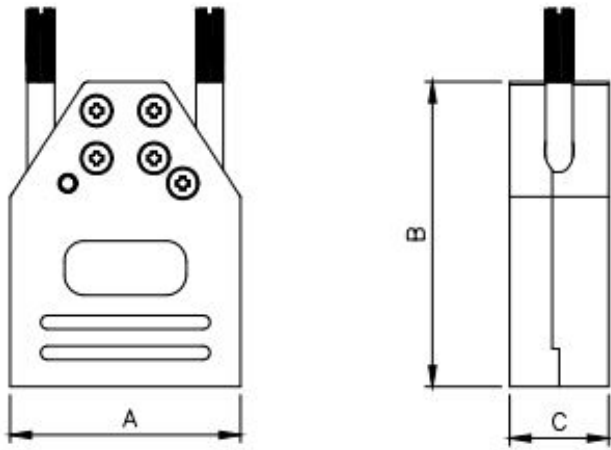
### Specification

#### Hood:

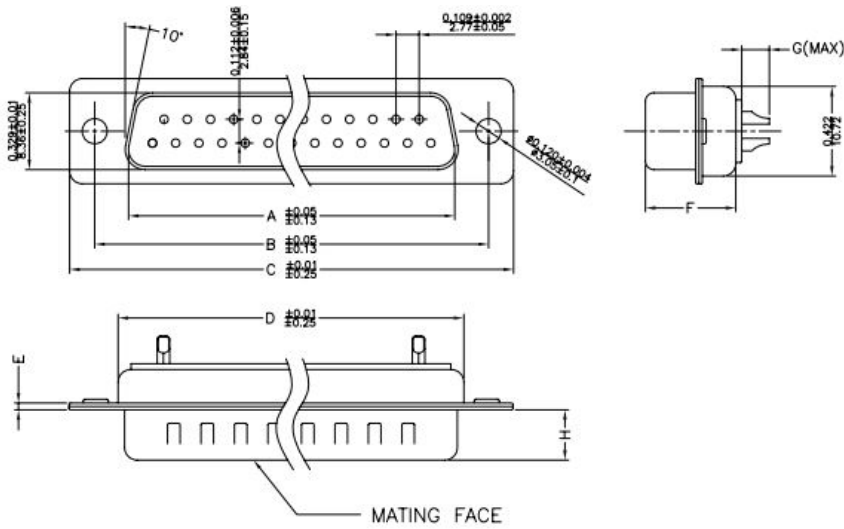
- No Contacts: 9, 15, 25
- Kit Type: D-Sub Connector Kit
- Housing Material: Nickel Plated Zinc
- Cable Entry: Straight, 90 degree
- Cable OD: Up to 13.0mm

#### D-Sub Connector:

- Voltage Rating: 250V
- Current Rating: 5 Amps
- Contact Resistance: 25mA Max
- Insulation Resistance: 1000MΩ
- Operating Temperature: -55°C to 105°C
- Shell: Tin Plated Steel
- Insulator Material: Glass Filled Polyester
- Contact Material: Copper Alloy
- Contact Plating: Gold over Nickel



Dimensions				
Size	A	B	C	D
09	34.0	45.0	14.6	24.99
	1.34	1.77	0.57	0.984
15	43.0	45.0	14.6	33.32
	1.69	1.77	0.57	1.312
25	56.5	45.0	14.6	47.04
	2.22	1.77	0.57	1.852



Dimensions			
	09	15	25
A	16.92	25.25	38.96
B	24.99	33.32	47.04
C	30.81	39.14	53.04
D	19.23	27.56	41.30
E	1.0	1.0	1.0
F	10.8	10.8	10.8
G	2.7	2.7	2.7
H	5.84	5.84	5.84

Part No	Positions	Male/Female	Contact Type	Hood Part No	D-Sub Part No
MHDTZI09-DM9P-K	9 Pin	Male	Machined	MHDTZI9-K	MHDM9SP
MHDTZI15-DM15P-K	15 Pin	Male	Machined	MHDTZI15-K	MHDM15SP
MHDTZI25-DM25P-K	25 Pin	Male	Machined	MHDTZI25-K	MHDM25SP
MHDTZI09-DM9S-K	9 Pin	Female	Machined	MHDTZI9-K	MHDM9SS
MHDTZI15-DM15S-K	15 Pin	Female	Machined	MHDTZI15-K	MHDM15SS
MHDTZI25-DM25S-K	25 Pin	Female	Machined	MHDTZI25-K	MHDM25SS