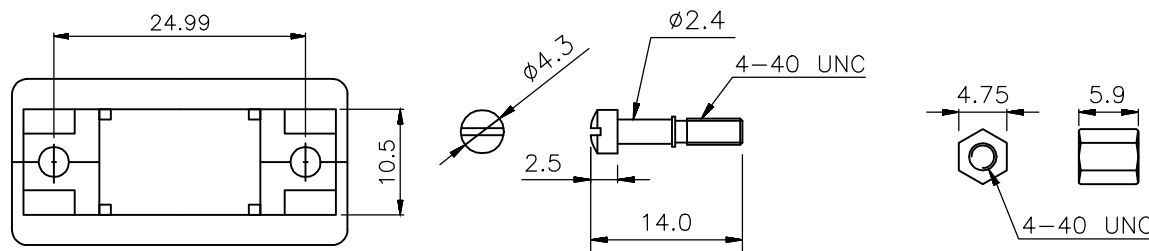


THIS IS A C.A.D. GENERATED DRAWING  
DO NOT MAKE MANUAL REVISIONS TO MASTER.

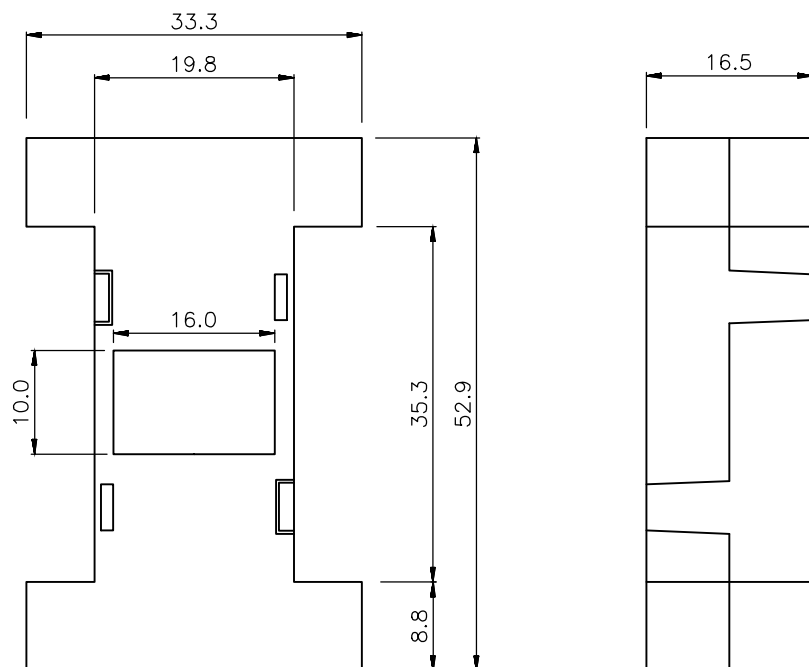


\* UNLESS OTHERWISE SPECIFIED TOLERANCES  
ON DECIMAL IS: ANGLE  $\pm 5'$   
UNIT: MM X:  $\pm 0.5$   
.X  $\pm 0.3$   
.XX  $\pm 0.2$



**SPECIFICATION:**

1. INSULATOR: ABS UL94HB.
2. SCREW: STEEL.
3. FINISHED: CHROMATE PLATED.
4. PARTS OPTION:  
M/M= 4PCS SHORT SCREW ONLY.  
M/F= 4PCS SHORT SCREW+2PCS HEX-NUT.  
F/F= 4PCS SHORT SCREW+4PCS HEX-NUT.



PARTS OPTION	WIRE DESCRIBE
M/M	Black, brown, red, orange, yellow, green, blue, grey, white. Each 1 pcs yellow 1 M to 2 M : 1 pcs.
M/F	Black, brown, red, orange, yellow, green, blue, grey, white. Each 1 pcs Yellow 1 M to 2 M :1 pcs , 1F to 2M :1 pcs .
F/F	Black, brown, red, orange, yellow, green, blue, grey, white. Each 1 pcs yellow 1 F to 2 F : 1 pcs.

**ORDERING INFORMATION:**

**UNSHIELDED VERSION**

SIZE	P/N - KITTED	PRODUCT CODE
9-WAY	2111-0101-01	MHGA0909-MM-LG-K-RC
9-WAY	2111-0101-11	MHGA0909-MF-LG-K-RC
9-WAY	2111-0101-21	MHGA0909-FF-LG-K-RC

**ORDERING INFORMATION:**

**SHIELDED VERSION**

SIZE	P/N - KITTED	PRODUCT CODE
9-WAY	2111-0105-01	MHGA0909-MM-M-K-RC
9-WAY	2111-0105-11	MHGA0909-MF-M-K-RC
9-WAY	2111-0105-21	MHGA0909-FF-M-K-RC

THESE DRAWINGS AND SPECIFICATIONS ARE THE PROPERTY OF MH CONNECTORS LTD. AND SHALL NOT BE REPRODUCED, COPIED OR USED AS THE BASIS FOR THE MANUFACTURE OR SALE OF APPARATUS WITHOUT WRITTEN PERMISSION.

DRAWN  
JOHNNY  
DATE  
07-17-13

APPROVED  
DAMIEN  
DATE  
01-07-14

SCALE SHEET OF REV:  
1 OF 1 3.0

DRAWING No  
MHGA0909-XX-XX-K-RC



THIS SERIES FULLY CONFORMS TO THE EUROPEAN UNION DIRECTIVES 2002/95/EC AND 2002/96/EC FOR RoHS COMPLIANCY.

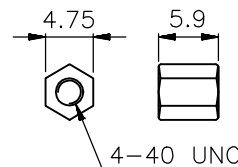
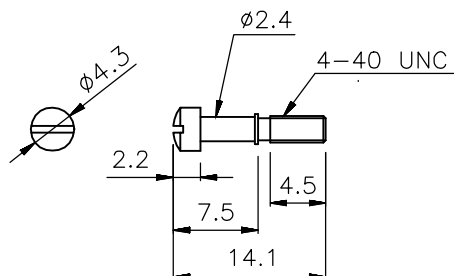
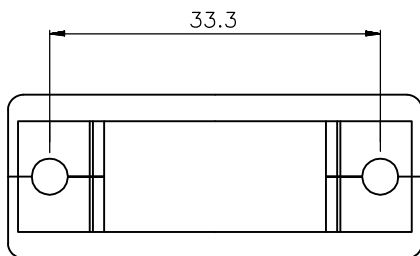


**MH CONNECTORS LTD.**

THIS IS A C.A.D. GENERATED DRAWING  
DO NOT MAKE MANUAL REVISIONS TO MASTER.

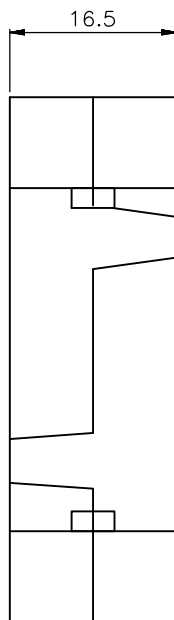
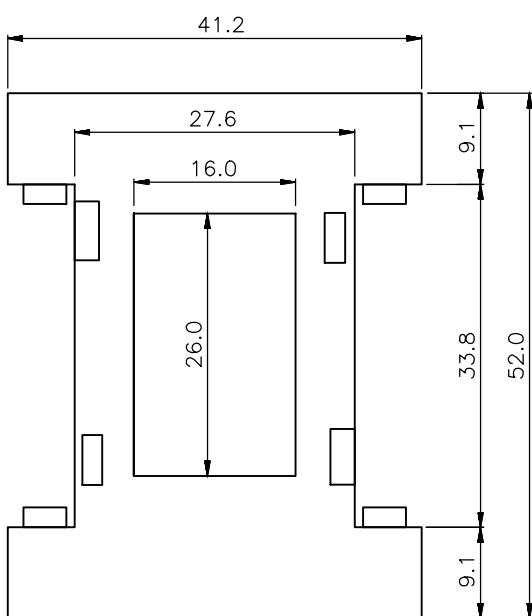


\* UNLESS OTHERWISE SPECIFIED TOLERANCES  
ON DECIMAL IS: ANGLE  $\pm 5^\circ$   
UNIT: MM X:  $\pm 0.5$   
.X  $\pm 0.3$   
.XX  $\pm 0.2$



**SPECIFICATION:**

1. INSULATOR: ABS UL94HB.
2. SCREW: STEEL.
3. FINISHED: CHROMATE PLATED.
4. PARTS OPTION:  
M/M= 4PCS SHORT SCREW ONLY.  
M/F= 4PCS SHORT SCREW+2PCS HEX-NUT.  
F/F= 4PCS SHORT SCREW+4PCS HEX-NUT.



PARTS OPTION	WIRE DESCRIBE
M/M	Black, brown, red, orange, yellow, Each 2 pcs . green, blue, grey, white, purple, Each 1 pcs . yellow 1 M to 2 M : 1 pcs.
M/F	Black, brown, red, orange, yellow, Each 2 pcs . green, blue, grey, white, purple, Each 1 pcs . Yellow 1 M to 2 M : 1 pcs , 1F to 2M : 1 pcs .
F/F	Black, brown, red, orange, yellow, Each 2 pcs . green, blue, grey, white, purple, Each 1 pcs . yellow 1 F to 2 F : 1 pcs.

**ORDERING INFORMATION:**

**UNSHIELDED VERSION**

SIZE	P/N - KITTED	PRODUCT CODE
15-WAY	2111-0101-02	MHGA1515-MM-LG-K-RC
15-WAY	2111-0101-12	MHGA1515-MF-LG-K-RC
15-WAY	2111-0101-22	MHGA1515-FF-LG-K-RC

**ORDERING INFORMATION:**

**SHIELDED VERSION**

SIZE	P/N - KITTED	PRODUCT CODE
15-WAY	2111-0105-02	MHGA1515-MM-M-K-RC
15-WAY	2111-0105-12	MHGA1515-MF-M-K-RC
15-WAY	2111-0105-22	MHGA1515-FF-M-K-RC

THESE DRAWINGS AND SPECIFICATIONS ARE THE PROPERTY OF MH CONNECTORS LTD. AND SHALL NOT BE REPRODUCED, COPIED OR USED AS THE BASIS FOR THE MANUFACTURE OR SALE OF APPARATUS WITHOUT WRITTEN PERMISSION.

DRAWN J0HNNY DATE 07-16-13

APPROVED DAMIEN DATE 01-07-14



THIS SERIES FULLY CONFORMS TO THE EUROPEAN UNION DIRECTIVES 2002/95/EC AND 2002/96/EC FOR RoHS COMPLIANCY.



**MH CONNECTORS LTD.**

SCALE SHEET OF REV:  
1 OF 1 2.0

DRAWING No  
MHGA1515-XX-XX-K-RC

THIS IS A C.A.D. GENERATED DRAWING  
DO NOT MAKE MANUAL REVISIONS TO MASTER.



\* UNLESS OTHERWISE SPECIFIED TOLERANCES  
ON DECIMAL IS: ANGLE  $\pm 5'$   
UNIT: MM X:  $\pm 0.5$   
.X  $\pm 0.3$   
.XX  $\pm 0.2$

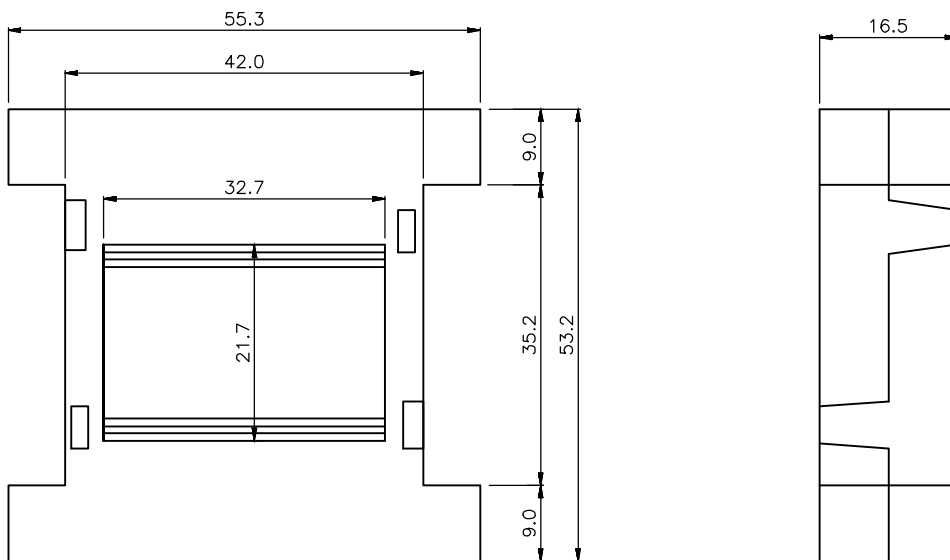
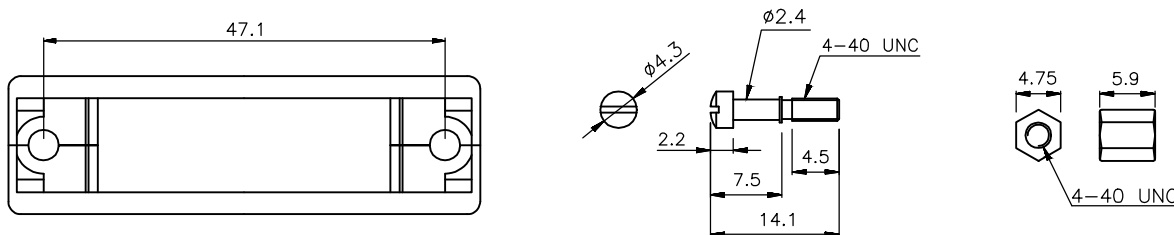
**SPECIFICATION:**

1. INSULATOR: ABS UL94HB.
2. SCREW: STEEL.
3. FINISHED: CHROMATE PLATED.
4. PARTS OPTION:

M/M= 4PCS SHORT SCREW ONLY.

M/F= 4PCS SHORT SCREW+2PCS HEX-NUT.

F/F= 4PCS SHORT SCREW+4PCS HEX-NUT.



PARTS OPTION	WIRE DESCRIBE
M/M	Black, brown, red, orange, yellow, Each 3 pcs . green, blue, grey, white, purple, Each 2 pcs . yellow 1 M to 2 M : 1 pcs.
M/F	Black, brown, red, orange, yellow, Each 3 pcs . green, blue, grey, white, purple, Each 2 pcs . Yellow 1 M to 2 M : 1 pcs . 1F to 2M : 1 pcs .
F/F	Black, brown, red, orange, yellow, Each 3 pcs . green, blue, grey, white, purple, Each 2 pcs . yellow 1 F to 2 F : 1 pcs.

**ORDERING INFORMATION:**

**UNSHIELDED VERSION**

SIZE	P/N - KITTED	PRODUCT CODE
25-WAY	2111-0101-03	MHGA2525-MM-LG-K-RC
25-WAY	2111-0101-13	MHGA2525-MF-LG-K-RC
25-WAY	2111-0101-23	MHGA2525-FF-LG-K-RC

**ORDERING INFORMATION:**

**SHIELDED VERSION**

SIZE	P/N - KITTED	PRODUCT CODE
25-WAY	2111-0105-03	MHGA2525-MM-M-K-RC
25-WAY	2111-0105-13	MHGA2525-MF-M-K-RC
25-WAY	2111-0105-23	MHGA2525-FF-M-K-RC

THESE DRAWINGS AND SPECIFICATIONS ARE THE PROPERTY OF MH CONNECTORS LTD. AND SHALL NOT BE REPRODUCED, COPIED OR USED AS THE BASIS FOR THE MANUFACTURE OR SALE OF APPARATUS WITHOUT WRITTEN PERMISSION.

DRAWN  
JOHNNY  
DATE  
07-16-13

APPROVED  
DAMIEN  
DATE  
01-07-14

SCALE SHEET OF REV:  
1 OF 1 2.0

DRAWING No  
MHGA2525-XX-XX-K-RC



THIS SERIES FULLY CONFORMS TO THE EUROPEAN UNION DIRECTIVES 2002/95/EC AND 2002/96/EC FOR RoHS COMPLIANCY.



**MH CONNECTORS LTD.**