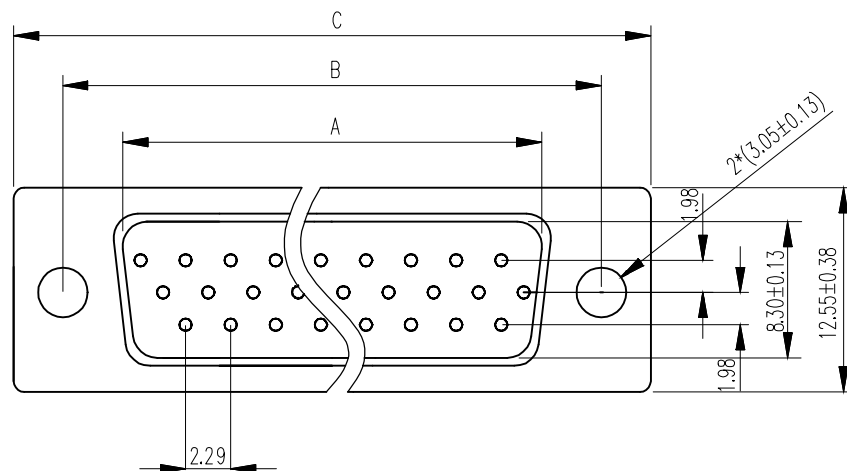


THIS IS A C.A.D. GENERATED DRAWING  
DO NOT MAKE MANUAL REVISIONS TO MASTER.



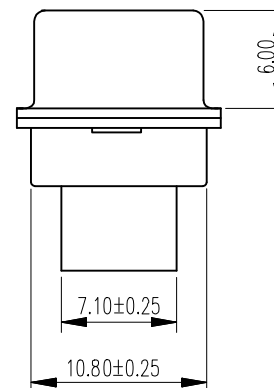
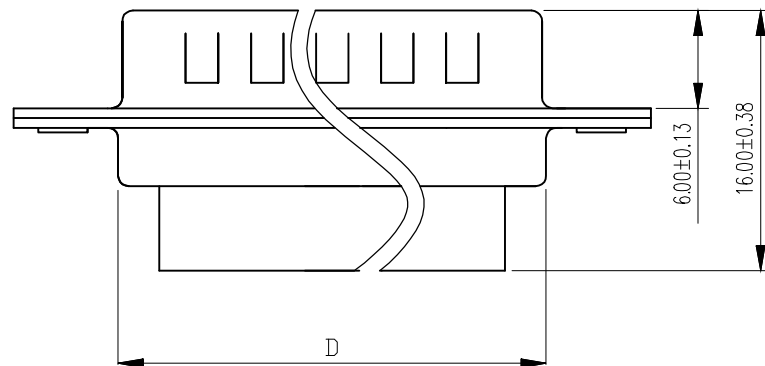
\* UNLESS OTHERWISE SPECIFIED TOLERANCES  
ON DECIMAL IS: ANGLE X.° ±2'  
UNIT: MM X.X° ±0.05°  
X.X ±0.38  
X.XX ±0.25  
X.XXX ±0.13



Ordering Info	Dimensions(mm)				
Part Number	SIZE	A±0.25	B±0.13	C±0.38	D±0.25
MHHDBC15-SP	15	16.92	24.99	30.81	19.28
MHHDBC26-SP	26	25.25	33.32	39.14	27.51
MHHDBC44-SP	44	38.96	47.04	53.04	41.28
MHHDBC62-SP	62	55.42	63.50	69.32	57.71

Order Codes:

Plug Connector		
15	2101-0390-01	MHHDBC15-SP
26	2101-0390-02	MHHDBC26-SP
44	2101-0390-03	MHHDBC44-SP
62	2101-0390-04	MHHDBC62-SP



## 1. MATERIALS AND FINISH

- 1.1 SHELL: STEEL MATERIAL, FRONT TIN FINISHED  
BACK SHELL TIN FINISHED.  
1.2 INSULATOR: PBT THERMOPLASTIC, 30% GLASS  
FILLED, UL 94V-0 RATED, BLACK COLOR.

THESE DRAWINGS AND SPECIFICATIONS ARE THE PROPERTY OF MH CONNECTORS LTD. AND SHALL NOT BE REPRODUCED, COPIED OR USED AS THE BASIS FOR THE MANUFACTURE OR SALE OF APPARATUS WITHOUT WRITTEN PERMISSION.

DRAWN	DATE
HALEY	11-14-13

APPROVED	DATE
DAMIEN	11-15-13

SCALE	SHEET OF	REV:
	1 OF 1	5.0

DRAWING No  
MHHDBCXX-SP



THIS SERIES FULLY CONFORMS TO THE EUROPEAN UNION DIRECTIVES 2002/95/EC AND 2002/96/EC FOR RoHS COMPLIANCY.

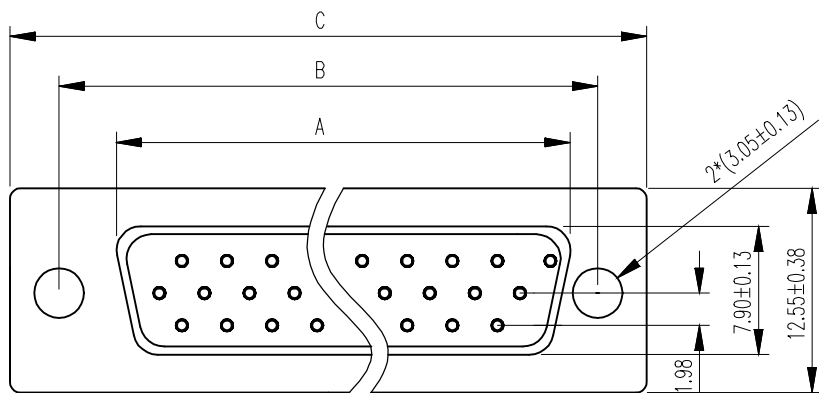


MH CONNECTORS LTD.

THIS IS A C.A.D. GENERATED DRAWING  
DO NOT MAKE MANUAL REVISIONS TO MASTER.



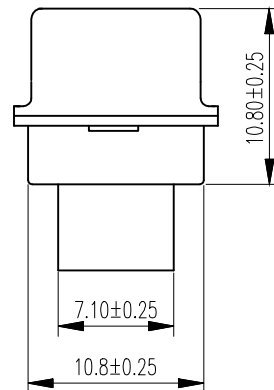
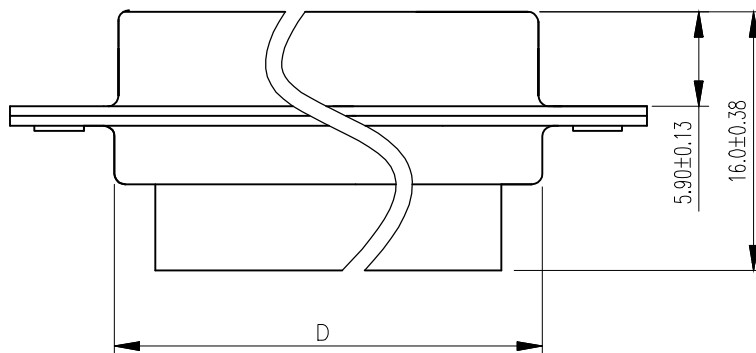
\* UNLESS OTHERWISE SPECIFIED TOLERANCES  
ON DECIMAL IS: ANGLE X° ±2°  
UNIT: MM X.X° ±0.05°  
X.X ±0.38  
X.XX ±0.25  
X.XXX ±0.13



Ordering Info	Dimensions(mm)				
Part Number	SIZE	A±0.25	B±0.13	C±0.38	D±0.25
MHHDBC15-SS	15	16.33	24.99	30.81	19.28
MHHDBC26-SS	26	24.66	33.32	39.14	27.65
MHHDBC44-SS	44	38.38	47.04	53.04	41.30
MHHDBC62-SS	62	54.84	63.50	69.32	57.44

Order Codes:

Socket Connector		
15	2101-0390-11	MHHDBC15-SS
26	2101-0390-12	MHHDBC26-SS
44	2101-0390-13	MHHDBC44-SS
62	2101-0390-14	MHHDBC62-SS



## 1. MATERIALS AND FINISH

1.1 SHELL: STEEL MATERIAL, FRONT TIN FINISHED  
BACK SHELL TIN FINISHED.

1.2 INSULATOR: PBT THERMOPLASTIC, 30% GLASS  
FILLED, UL 94V-0 RATED, BLACK COLOR.

THESE DRAWINGS AND SPECIFICATIONS ARE THE  
PROPERTY OF MH CONNECTORS LTD. AND SHALL NOT  
BE REPRODUCED, COPIED OR USED AS THE BASIS FOR  
THE MANUFACTURE OR SALE OF APPARATUS WITHOUT  
WRITTEN PERMISSION.

DRAWN	DATE
HALEY	11-14-13

APPROVED	DATE
DAMIEN	11-15-13

SCALE	SHEET OF	REV:
	1 OF 1	5.0

DRAWING No  
MHHDBCXX-SS



THIS SERIES FULLY CONFORMS TO THE  
EUROPEAN UNION DIRECTIVES 2002/95/EC  
AND 2002/96/EC FOR RoHS COMPLIANCY.



MH CONNECTORS LTD.