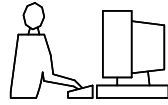
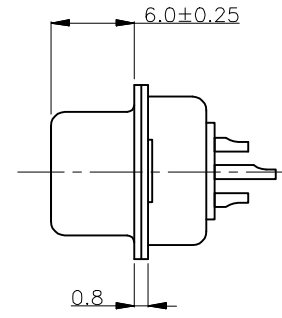
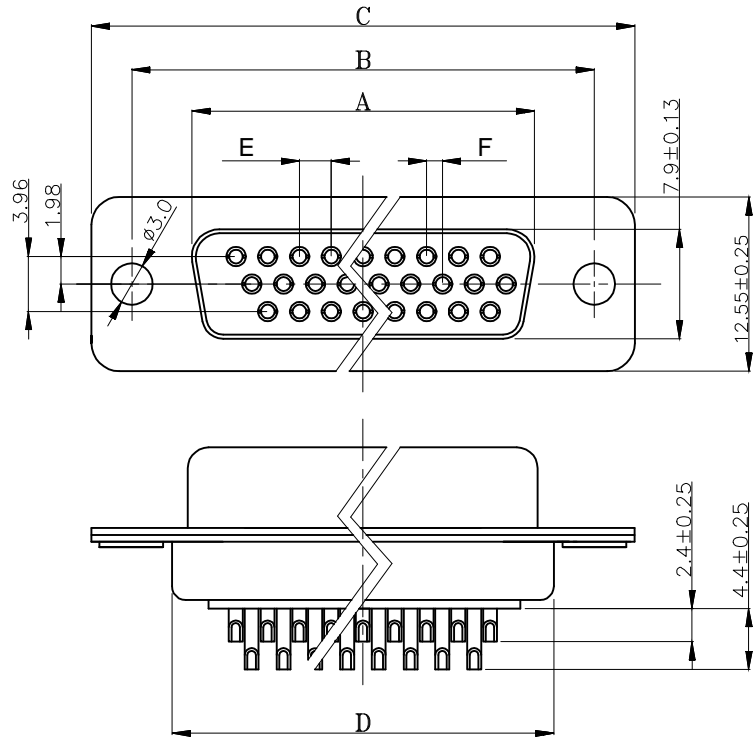


THIS IS A C.A.D. GENERATED DRAWING
DO NOT MAKE MANUAL REVISIONS TO MASTER.



* UNLESS OTHERWISE SPECIFIED TOLERANCES
ON DECIMAL IS: ANGLE ± 2°

UNIT: MM
X.X ±0.5
X.X ±0.25
X.XX ±0.10
X.XXX ±0.05



Ordering Information		Dimensions(mm)						
Part Number	SIZE	A±0.2	B±0.2	C±0.2	D±0.2	E	F	
MHHDS-15-F-T-B-M	15	16.33	24.99	30.81	19.28	2.29	1.15	
MHHDS-26-F-T-B-M	26	24.70	33.30	39.20	27.70	2.29	1.15	
MHHDS-44-F-T-B-M	44	38.38	47.04	53.04	41.30	2.29	1.15	
MHHDS-62-F-T-B-M	62	54.84	63.50	69.32	57.44	2.41	1.21	

1. MATERIALS AND FINISH

- 1.1 SHELL: STEEL MATERIAL, FRONT TIN FINISHED
BACK SHELL TIN FINISHED.
- 1.2 INSULATOR: PBT THERMOPLASTIC, 30% GLASS
FILLED, UL 94V-0 RATED, BLACK COLOR.
- 1.3 CONTACT MATERIAL: PHOSCU.
- 1.4 CONTACT FINISH: FULL GOLD FINISHED.

2.ELECTRICAL CHARACTERISTICS

- 2.1 CONTACT CURRENT RATING: 5.0 AMPS.
- 2.2 CONTACT RESISTANCE: 30 MILLIOHMS MAX.
- 2.3 DIELECTRIC WITHSTANDING VOLTAGE: 1000V AC MIN.
- 2.4 INSULATION RESISTANCE: 5000 MEGAOHMS MIN.
- 2.5 TEMPERATURE RATING: -55°C~+105°C.
- 2.6 SUITABLE FOR 500 MATING CYCLES.

Order Codes

Plug Connector	Machined Contacts
15 2101-0400-11	MHHDS-15-F-T-B-M
26 2101-0400-12	MHHDS-26-F-T-B-M
44 2101-0400-13	MHHDS-44-F-T-B-M
62 2101-0400-14	MHHDS-62-F-T-B-M

THESE DRAWINGS AND SPECIFICATIONS ARE THE PROPERTY OF MH CONNECTORS LTD. AND SHALL NOT BE REPRODUCED, COPIED OR USED AS THE BASIS FOR THE MANUFACTURE OR SALE OF APPARATUS WITHOUT WRITTEN PERMISSION.

DRAWN
Arthur Zheng
DATE
01-31-18

APPROVED
Victor Lin
DATE
01-31-18

SCALE
SHEET OF
1 OF 1
REV:
3.0

DRAWING No
MHHDS-XX-F-T-B-M

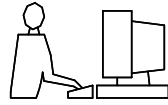


THIS SERIES FULLY CONFORMS TO THE EUROPEAN UNION DIRECTIVES 2002/95/EC AND 2002/96/EC FOR RoHS COMPLIANCY.



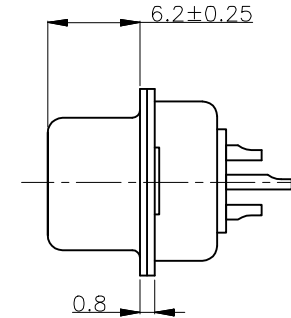
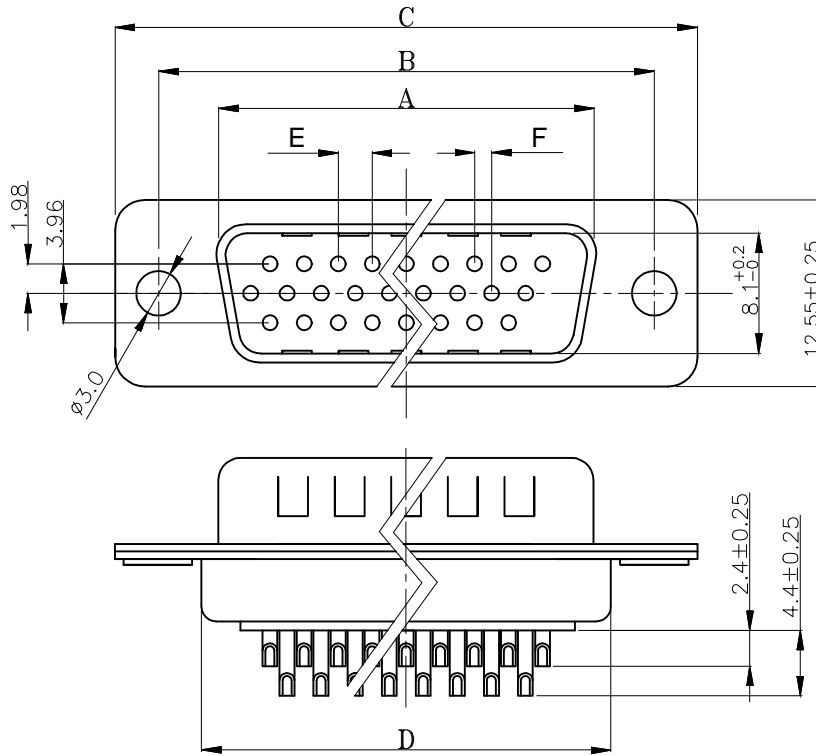
**MH CONNECTORS ,
DIVISION OF EDAC**

THIS IS A C.A.D. GENERATED DRAWING
DO NOT MAKE MANUAL REVISIONS TO MASTER.



* UNLESS OTHERWISE SPECIFIED TOLERANCES
ON DECIMAL IS: ANGLE $\pm 2^\circ$

UNIT: MM X.X* $\pm 0.5'$
 X.X ± 0.25
 X.XX ± 0.10
 X.XXX ± 0.05



1. MATERIALS AND FINISH

- 1.1 SHELL: STEEL MATERIAL, FRONT TIN FINISHED
BACK SHELL TIN FINISHED.
- 1.2 INSULATOR: PBT THERMOPLASTIC, 30% GLASS
FILLED, UL 94V-0 RATED, BLACK COLOR.
- 1.3 CONTACT MATERIAL: BRASS.
- 1.4 CONTACT FINISH: FULL GOLD FINISHED.

2. ELECTRICAL CHARACTERISTICS

- 2.1 CONTACT CURRENT RATING: 5.0 AMPS.
- 2.2 CONTACT RESISTANCE: 30 MILLIOHMS MAX.
- 2.3 DIELECTRIC WITHSTANDING VOLTAGE: 1000V AC MIN.
- 2.4 INSULATION RESISTANCE: 5000 MEGAOHMS MIN.
- 2.5 TEMPERATURE RATING: $-55^\circ\text{C}\sim+105^\circ\text{C}$.
- 2.6 SUITABLE FOR 500 MATING CYCLES.

Ordering Information		Dimensions(mm)					
Part Number	SIZE	A ± 0.2	B ± 0.2	C ± 0.2	D ± 0.2	E	E
MHHDS-15-M-T-B-M	15	16.92	24.99	30.81	19.24	2.29	1.15
MHHDS-26-M-T-B-M	26	25.25	33.30	39.20	27.70	2.29	1.15
MHHDS-44-M-T-B-M	44	38.96	47.04	53.04	41.10	2.29	1.15
MHHDS-62-M-T-B-M	62	55.42	63.50	69.45	57.25	2.41	1.21

Order Codes:

Plug Connector	Machined Contacts
15 2101-0400-01	MHHDS-15-M-T-B-M
26 2101-0400-02	MHHDS-26-M-T-B-M
44 2101-0400-03	MHHDS-44-M-T-B-M
62 2101-0400-04	MHHDS-62-M-T-B-M

THESE DRAWINGS AND SPECIFICATIONS ARE THE PROPERTY OF MH CONNECTORS LTD. AND SHALL NOT BE REPRODUCED, COPIED OR USED AS THE BASIS FOR THE MANUFACTURE OR SALE OF APPARATUS WITHOUT WRITTEN PERMISSION.

DRAWN
Arthur Zheng DATE
01-31-18

APPROVED
Victor Lin DATE
01-31-18

SCALE SHEET OF REV:
 1 OF 1 3.0

DRAWING No
MHHDS-XX-M-T-B-M



THIS SERIES FULLY CONFORMS TO THE
EUROPEAN UNION DIRECTIVES 2002/95/EC
AND 2002/96/EC FOR RoHS COMPLIANCY.



MH CONNECTORS,
DIVISION OF EDAC