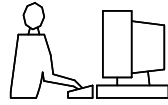
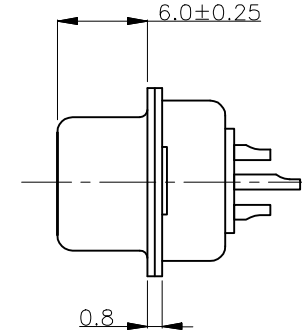
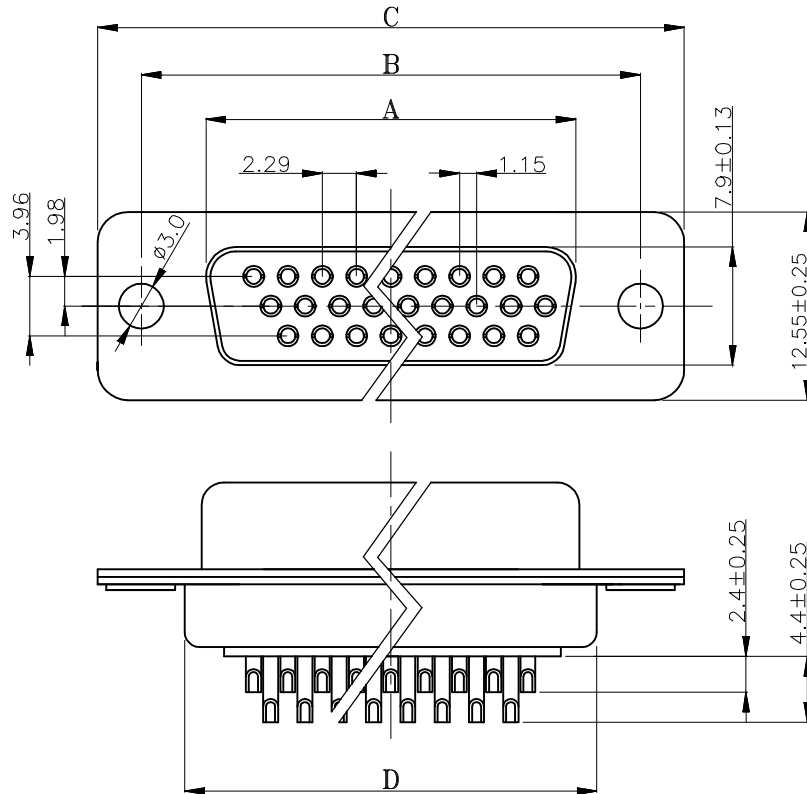


THIS IS A C.A.D. GENERATED DRAWING
DO NOT MAKE MANUAL REVISIONS TO MASTER.



* UNLESS OTHERWISE SPECIFIED TOLERANCES
ON DECIMAL IS: ANGLE X.[°] ±2'
X.X[°] ±0.5'
UNIT: MM X.X ±0.25
X.XX ±0.10
X.XXX ±0.05



Ordering Information	Dimensions(mm)				
	Part Number	SIZE	A±0.2	B±0.2	C±0.2
MHHDS-15-F-T-B-M	15	16.33	24.99	30.81	19.28
MHHDS-26-F-T-B-M	26	24.70	33.30	39.20	27.70
MHHDS-44-F-T-B-M	44	38.38	47.04	53.04	41.30
MHHDS-62-F-T-B-M	62	54.84	63.50	69.32	57.44

Order Codes

Plug Connector	Machined Contacts
15 2101-0400-11	MHHDS-15-F-T-B-M
26 2101-0400-12	MHHDS-26-F-T-B-M
44 2101-0400-13	MHHDS-44-F-T-B-M
62 2101-0400-14	MHHDS-62-F-T-B-M

1. MATERIALS AND FINISH

- 1.1 SHELL: STEEL MATERIAL, FRONT TIN FINISHED
BACK SHELL TIN FINISHED.
- 1.2 INSULATOR: PBT THERMOPLASTIC, 30% GLASS
FILLED, UL 94V-0 RATED, BLACK COLOR.
- 1.3 CONTACT MATERIAL: PHOSCU.
- 1.4 CONTACT FINISH: FULL GOLD FINISHED.

2.ELECTRICAL CHARACTERISTICS

- 2.1 CONTACT CURRENT RATING: 5.0 AMPS.
- 2.2 CONTACT RESISTANCE: 30 MILLIOHMS MAX.
- 2.3 DIELECTRIC WITHSTANDING VOLTAGE: 1000V AC MIN.
- 2.4 INSULATION RESISTANCE: 5000 MEGAOHMS MIN.
- 2.5 TEMPERATURE RATING: -55°C~+105°C.
- 2.6 SUITABLE FOR 500 MATING CYCLES.

THESE DRAWINGS AND SPECIFICATIONS ARE THE PROPERTY OF MH CONNECTORS LTD. AND SHALL NOT BE REPRODUCED, COPIED OR USED AS THE BASIS FOR THE MANUFACTURE OR SALE OF APPARATUS WITHOUT WRITTEN PERMISSION.

DRAWN HALEY		DATE 11-04-13
APPROVED DAMIEN		DATE 11-05-13
SCALE	SHEET OF 1 OF 1	REV: 3.0
DRAWING No MHHDS-XX-F-T-B-M		

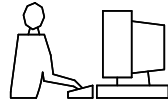


THIS SERIES FULLY CONFORMS TO THE EUROPEAN UNION DIRECTIVES 2002/95/EC AND 2002/96/EC FOR RoHS COMPLIANCY.

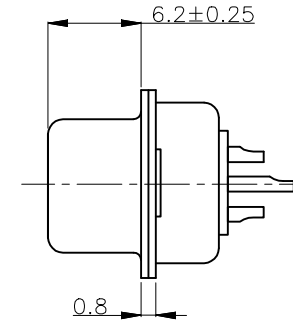
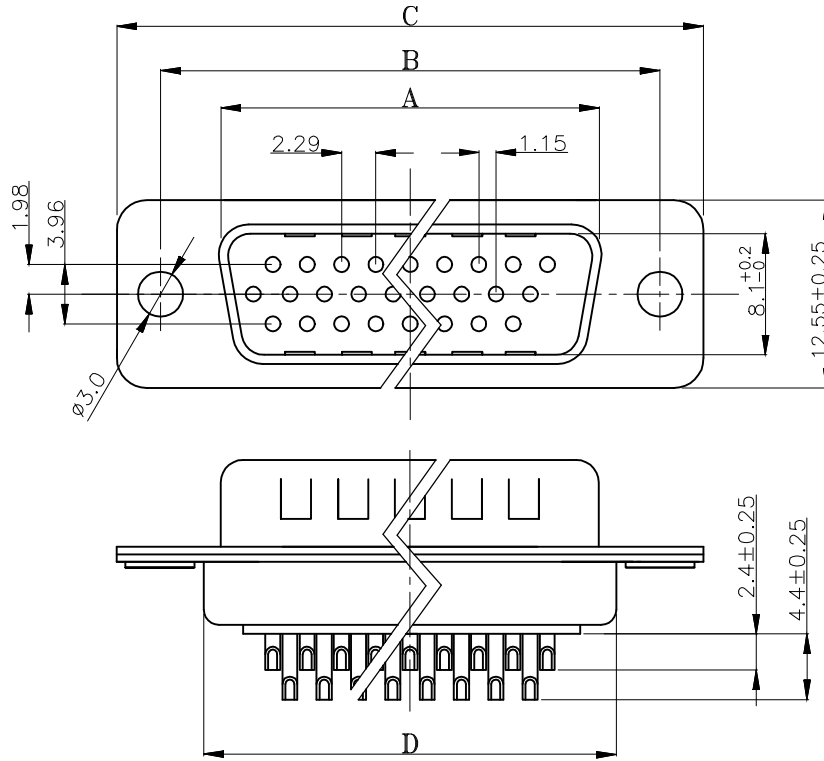


MH CONNECTORS LTD.

THIS IS A C.A.D. GENERATED DRAWING
DO NOT MAKE MANUAL REVISIONS TO MASTER.



* UNLESS OTHERWISE SPECIFIED TOLERANCES
ON DECIMAL IS: ANGLE X.' ±2"
X.X' ±0.5"
X.X ±0.25
X.XX ±0.10
X.XXX ±0.05



Ordering Information		Dimensions(mm)				
Part Number	SIZE	A±0.2	B±0.2	C±0.2	D±0.2	
MHHDS-15-M-T-B-M	15	16.92	24.99	30.81	19.24	
MHHDS-26-M-T-B-M	26	25.25	33.30	39.20	27.70	
MHHDS-44-M-T-B-M	44	38.96	47.04	53.04	41.10	
MHHDS-62-M-T-B-M	62	55.42	63.50	69.45	57.25	

Order Codes:

Plug Connector	Machined Contacts
15 2101-0400-01	MHHDS-15-M-T-B-M
26 2101-0400-02	MHHDS-26-M-T-B-M
44 2101-0400-03	MHHDS-44-M-T-B-M
62 2101-0400-04	MHHDS-62-M-T-B-M

1. MATERIALS AND FINISH

- 1.1 SHELL: STEEL MATERIAL, FRONT TIN FINISHED
BACK SHELL TIN FINISHED.
- 1.2 INSULATOR: PBT THERMOPLASTIC, 30% GLASS
FILLED, UL 94V-0 RATED, BLACK COLOR.
- 1.3 CONTACT MATERIAL: BRASS.
- 1.4 CONTACT FINISH: FULL GOLD FINISHED.

2. ELECTRICAL CHARACTERISTICS

- 2.1 CONTACT CURRENT RATING: 5.0 AMPS.
- 2.2 CONTACT RESISTANCE: 30 MILLIOHMS MAX.
- 2.3 DIELECTRIC WITHSTANDING VOLTAGE: 1000V AC MIN.
- 2.4 INSULATION RESISTANCE: 5000 MEGAOHMS MIN.
- 2.5 TEMPERATURE RATING: -55°C~+105°C.
- 2.6 SUITABLE FOR 500 MATING CYCLES.

THESE DRAWINGS AND SPECIFICATIONS ARE THE
PROPERTY OF MH CONNECTORS LTD. AND SHALL NOT
BE REPRODUCED, COPIED OR USED AS THE BASIS FOR
THE MANUFACTURE OR SALE OF APPARATUS WITHOUT
WRITTEN PERMISSION.

DRAWN HALEY		DATE 11-04-13	
APPROVED DAMIEN		DATE 11-05-13	
SCALE	SHEET OF 1 OF 1	REV: 3.0	
DRAWING No MHHDS-XX-M-T-B-M			



THIS SERIES FULLY CONFORMS TO THE
EUROPEAN UNION DIRECTIVES 2002/95/EC
AND 2002/96/EC FOR RoHS COMPLIANCY.



MH CONNECTORS LTD.