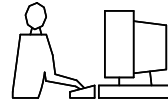


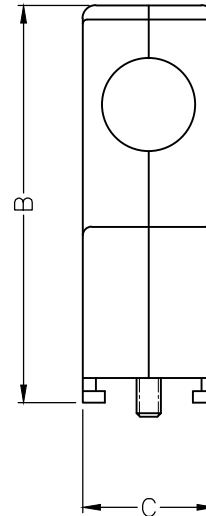
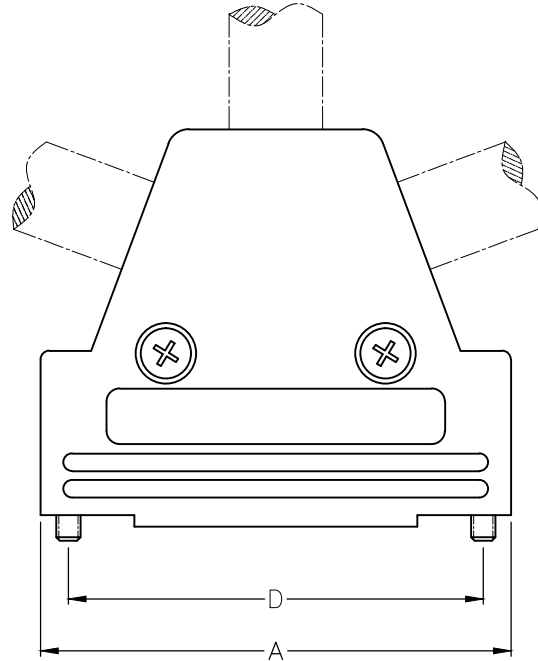
THIS IS A C.A.D. GENERATED DRAWING
DO NOT MAKE MANUAL REVISIONS TO MASTER.



* UNLESS OTHERWISE SPECIFIED TOLERANCES
ON DECIMAL IS: ANGLE ±1°
UNIT: MM

BACKSHELL KIT INCLUDES:

- (2)BACKSHELL HALVES
- (2)JACKSCREW 4-40
- (2)SHELL SCREW
- (2)METAL CLAMP
- (4)CLAMP SCREW
- (2)BLANKING PLATE



DIMENSIONS(mm/in)

Size	A ^{±1.30 ±0.051}	B ^{±1.30 ±0.051}	C ^{±1.20 ±0.047}	D ^{±0.25 ±0.01}
9	31.00	41.40	15.00	24.99
	1.221	1.630	0.591	0.984
15	40.30	45.20	15.00	33.32
	1.587	1.780	0.591	1.312
25	53.50	45.20	15.00	47.04
	2.106	1.780	0.591	1.852
37	70.00	45.20	15.00	63.50
	2.756	1.780	0.591	2.500

ORDERING INFORMATION:

SIZE	P/N-KITTED	PRODUCT CODE
9-WAY	6550-0101-01	MHTRI-P-09-K
15-WAY	6550-0101-02	MHTRI-P-15-K
25-WAY	6550-0101-03	MHTRI-P-25-K
37-WAY	6550-0101-04	MHTRI-P-37-K

BACKSHELL MATERIAL:	ABS UL 94-HB RATED
JACKSCREW 4-40:	STEEL -BLACK OXIDE FINISH
SHELL SCREW:	STEEL -BLACK OXIDE FINISH
METAL CLAMP:	STEEL -ZINC PLATED
CLAMP SCREW:	STEEL -ZINC PLATED
BLANKING PLATE:	ABS UL 94-HB RATED
OPERATING TEMP:	-55°C TO +120°C

THESE DRAWINGS AND SPECIFICATIONS ARE THE PROPERTY OF MH CONNECTORS LTD. AND SHALL NOT BE REPRODUCED, COPIED OR USED AS THE BASIS FOR THE MANUFACTURE OR SALE OF APPARATUS WITHOUT WRITTEN PERMISSION.

DRAWN JOHNNY		DATE 11-04-15
APPROVED VICTOR		DATE 11-04-15
SCALE	SHEET OF 1 OF 1	REV: 1.0
DRAWING No MHTRI-P-SERIES		



THIS SERIES FULLY CONFORMS TO THE EUROPEAN UNION DIRECTIVES 2002/95/EC AND 2002/96/EC FOR RoHS COMPLIANCY.



MH CONNECTORS LTD.