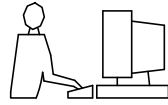


THIS IS A C.A.D. GENERATED DRAWING  
DO NOT MAKE MANUAL REVISIONS TO MASTER.



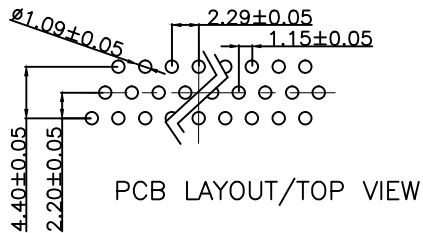
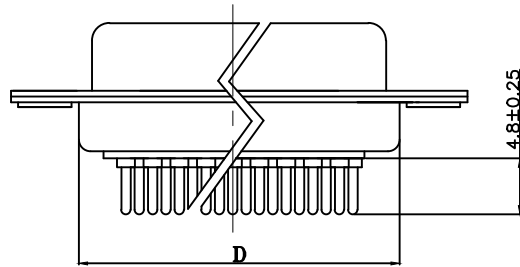
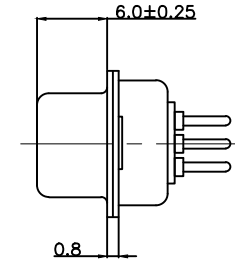
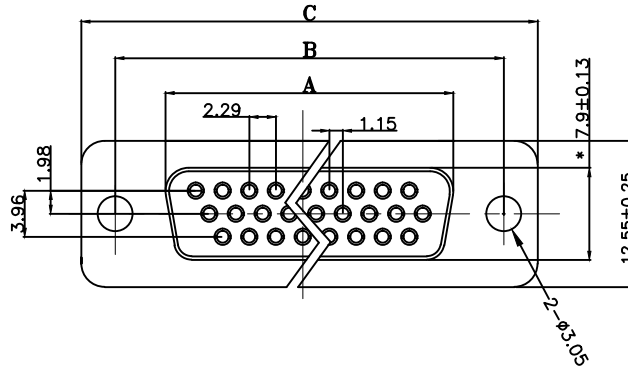
\* UNLESS OTHERWISE SPECIFIED TOLERANCES

ON DECIMAL IS: X.X ±0.35  
X.XX ±0.25  
X.XXX ±0.15  
X.\* ±1°  
X.X° ±0.05°

UNIT: MM

ISSUE NUMBER

ORIGINAL	①
Changed the shell plating from tin to nickel Iven Ou 2022/08/18	③
UPDATING FRAME Iven Ou 2023/03/10	④



PCB LAYOUT/TOP VIEW

NOTE:

1. MATERIALS AND FINISH

- 1.1 SHELL : STEEL MATERIAL, FRONT NICKEL FINISHED  
BACK SHELL NICKEL FINISHED
- 1.2 INSULATOR : PBT THERMOPLASTIC, 30% GLASS  
FILLED, UL 94V-0 RATED, BLACK COLOR
- 1.3 CONTACT MATERIAL : BRASS
- 1.4 CONTACT FINISH : GOLD FLASH OVER NICKEL

2. ELECTRICAL CHARACTERISTICS

- 2.1 CONTACT CURRENT RATING : 5.0 AMPS
- 2.2 CONTACT RESISTANCE : 30 MILLIOHMS MAX.
- 2.3 DIELECTRIC WITHSTANDING VOLTAGE : 1000 V AC MIN.
- 2.4 INSULATION RESISTANCE : 5000 MEGAOHMS MIN.
- 2.5 TEMPERATURE RATING : -55° C ~ +105° C

Order information	Dimensions (mm)				
	PART NO.	POS.	A±0.2	B±0.2	C±0.2
MHHDD15-F-N-B-M	15	16.33	24.99	30.81	19.28
MHHDD26-F-N-B-M	26	24.70	33.30	39.20	27.70
MHHDD44-F-N-B-M	44	38.38	47.04	53.04	41.30
MHHDD62-F-N-B-M	62	54.84	63.50	69.32	57.44

THESE DRAWINGS AND SPECIFICATIONS ARE THE PROPERTY OF MH CONNECTORS AND SHALL NOT BE REPRODUCED, COPIED OR USED AS THE BASIS FOR THE MANUFACTURE OR SALE OF APPARATUS WITHOUT WRITTEN PERMISSION.

DRAWN Iven Ou DATE 2022/08/18

APPROVED DATE

SCALE 1 : 1 SHEET OF 1 OF 1 REV: 4.0

DRAWING No MHHDDXX-F-N-B-M



THIS SERIES FULLY CONFORMS TO THE EUROPEAN UNION DIRECTIVES 2015/863/EU AND 2011/65/EU FOR RoHS COMPLIANCY.



MH CONNECTORS,  
DIVISION OF EDAC