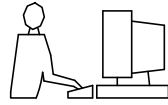


THIS IS A C.A.D. GENERATED DRAWING
DO NOT MAKE MANUAL REVISIONS TO MASTER.

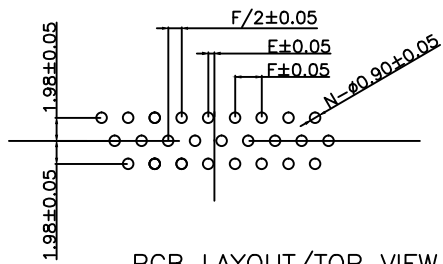
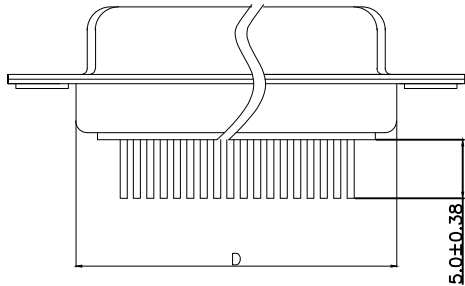
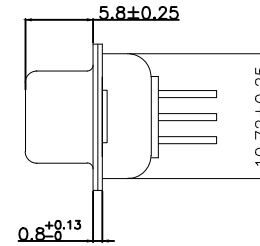
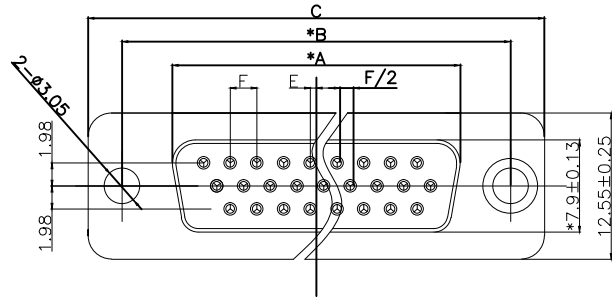


* UNLESS OTHERWISE SPECIFIED TOLERANCES
ON DECIMAL IS: XX ±0.38
 XX ±0.25
UNIT: MM XXX ±0.13
 X° ±2° XX° ±0.5°

ISSUE NUMBER

ORIGINAL ①

UPDATING FRAME ②
Iven Ou 2023/03/10



PCB LAYOUT/TOP VIEW

NOTES :

1. ELECTRICICE:

- 1.1 DIELECTRIC RATING: 300V
- 1.2 CONTACT CURRENT RATING: 2AMP
- 1.3 CONTACT RESISTANCE: 15mΩ MAX.
- 1.4 INSULATION RESISTANCE: 1000MΩ MIN. AT 500V DC
- 1.5 DIELECTRIC STRENGTH: 500V AC RMS FOR 1MINUTE
- 1.6 OPERATION TEMPERATURE: -55C° ~125C°

2. MATERIAL:

- 2.1 INSULATOR: PBT+30% G. F(UL94V-0)
- 2.2 CONTACT: COPPER ALLOY
- 2.3 CONTACT PLATED:GOLD FLASH OVER NICKEL
- 2.4 SHELL: SPCC
- 2.5 SHELL PLATED:NICKEL

Order information	Dimensions(mm)						
	PART NO.	PIN	A ±0.25	B ±0.13	C±0.38	D±0.13	E
MHHDD15-F-N-B-S	15	16.33	24.99	30.81	15.60	0.25	2.29
MHHDD26-F-N-B-S	26	24.66	33.32	39.14	24.40	0.505	2.29
MHHDD44-F-N-B-S	44	38.38	47.04	53.04	37.80	0.505	2.29
MHHDD62-F-N-B-S	62	54.84	63.50	69.32	54.50	0.585	2.41

THESE DRAWINGS AND SPECIFICATIONS ARE THE PROPERTY OF MH CONNECTORS AND SHALL NOT BE REPRODUCED, COPIED OR USED AS THE BASIS FOR THE MANUFACTURE OR SALE OF APPARATUS WITHOUT WRITTEN PERMISSION.

DRAWN Iven Ou DATE 2022/08/18

APPROVED DATE

SCALE 1 : 1 SHEET OF 1 OF 1 REV: 2.0

DRAWING No MHHDDXX-F-N-B-S

MH CONNECTORS ,
DIVISION OF EDAC



THIS SERIES FULLY CONFORMS TO THE EUROPEAN UNION DIRECTIVES 2015/863/EU AND 2011/65/EU FOR RoHS COMPLIANCY.

