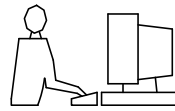
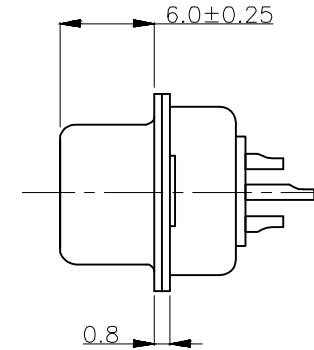
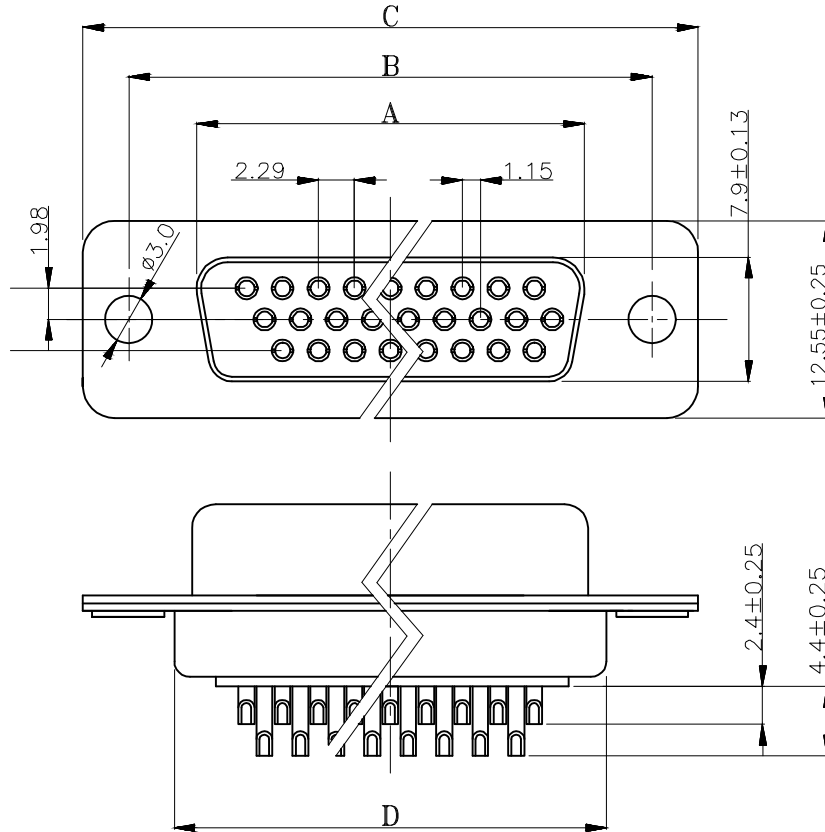


THIS IS A C.A.D. GENERATED DRAWING
DO NOT MAKE MANUAL REVISIONS TO MASTER.



* UNLESS OTHERWISE SPECIFIED TOLERANCES
ON DECIMAL IS: ANGLE X.' ±2'
X.X° ±0.5°
X.X ±0.25
X.XX ±0.10
X.XXX ±0.05
UNIT: MM



Ordering Information Part Number	SIZE	Dimensions(mm)			
		A±0.2	B±0.2	C±0.2	D±0.2
MHHDS-15-F-N-B-M	15	16.33	24.99	30.81	19.28
MHHDS-26-F-N-B-M	26	24.70	33.30	39.20	27.70
MHHDS-44-F-N-B-M	44	38.38	47.04	53.04	41.30
MHHDS-62-F-N-B-M	62	54.84	63.50	69.32	57.44

1. MATERIALS AND FINISH

- 1.1 SHELL: STEEL MATERIAL, FRONT NICKEL FINISHED BACK SHELL NICKEL FINISHED
- 1.2 INSULATOR: PBT THERMOPLASTIC, 30% GLASS FILLED, UL 94V-D RATED, BLACK COLOR
- 1.3 CONTACT MATERIAL: PHOSCU
- 1.4 CONTACT FINISH: FULL GOLD FINISHED

2. ELECTRICAL CHARACTERISTICS

- 2.1 CONTACT CURRENT RATING: 5.0 AMPS.
- 2.2 CONTACT RESISTANCE: 30 MILLIOHMS MAX.
- 2.3 DIELECTRIC WITHSTANDING VOLTAGE: 1000V AC MIN
- 2.4 INSULATION RESISTANCE: 5000 MEGAOHMS MIN.
- 2.5 TEMPERATURE RATING: -55°C~+105°C.
- 2.6 SUITABLE FOR 500 MATING CYCLES.

THESE DRAWINGS AND SPECIFICATIONS ARE THE PROPERTY OF MH CONNECTORS AND SHALL NOT BE REPRODUCED, COPIED OR USED AS THE BASIS FOR THE MANUFACTURE OR SALE OF APPARATUS WITHOUT WRITTEN PERMISSION.

DRAWN
IVEN
DATE
08-09-22

APPROVED
DATE

SCALE
SHEET OF
1 OF 1
REV:
1.0

DRAWING No
MHHDS-XX-F-N-B-M



THIS SERIES FULLY CONFORMS TO THE EUROPEAN UNION DIRECTIVES 2002/95/EC AND 2002/96/EC FOR RoHS COMPLIANCY.



MH CONNECTORS,
DIVISION OF EDAC